

GeorgiaDATA™

More Information. Smarter Decisions.



Southwest Georgia Demographic, Economic, and Institutional Trends

Data compiled for the Albany State / Darton State Consolidation Committee

January 27, 2016



Introductions



David Tanner

Carl Vinson Institute of Government

Associate Director, State Services
and Decision Support Division

dtanner@uga.edu



Mathew Hauer

Carl Vinson Institute of Government

Applied Demographer, State Services and
Decision Support Division

hauer@uga.edu

What is your region?



Regional Commission
or
RESA



Carl Vinson Institute of Government
University of Georgia

Enrollment Driven

Congressional District

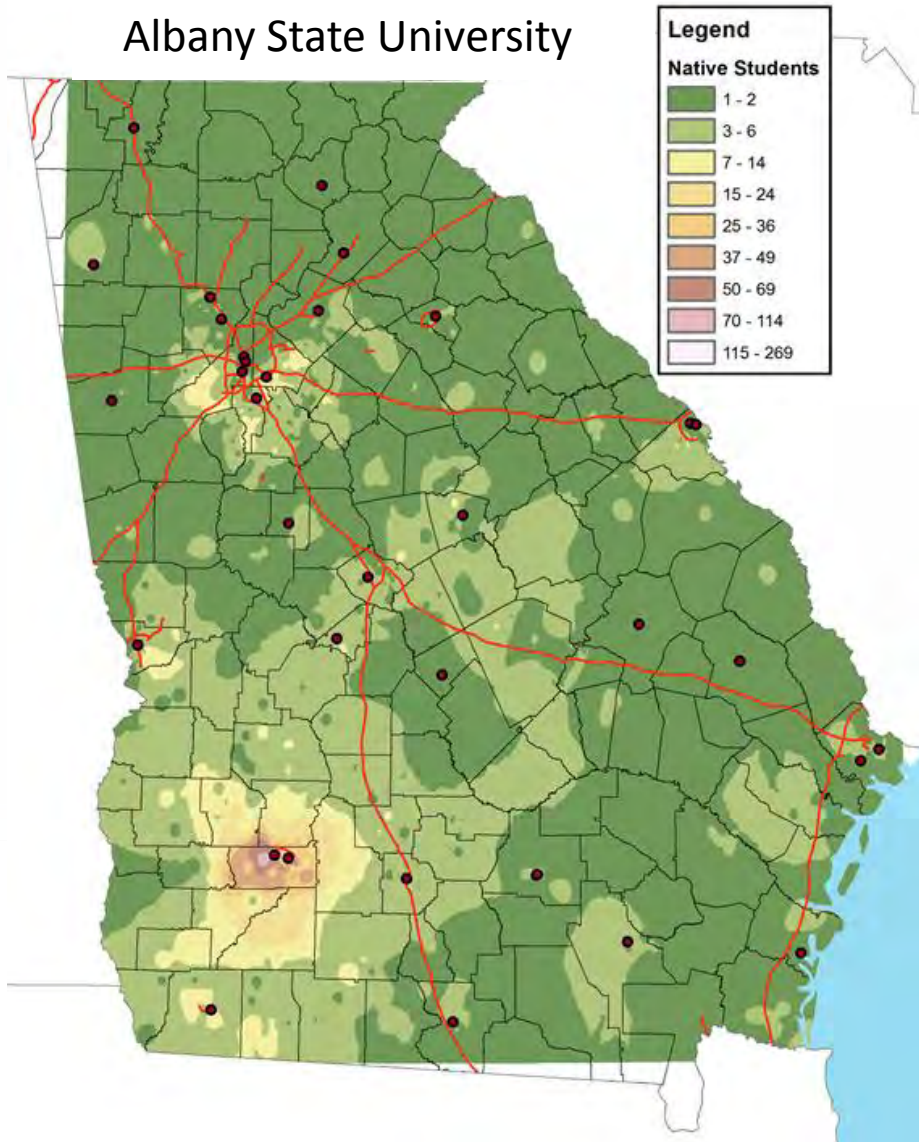


GeorgiaDATA[™]
More Information. Smarter Decisions.

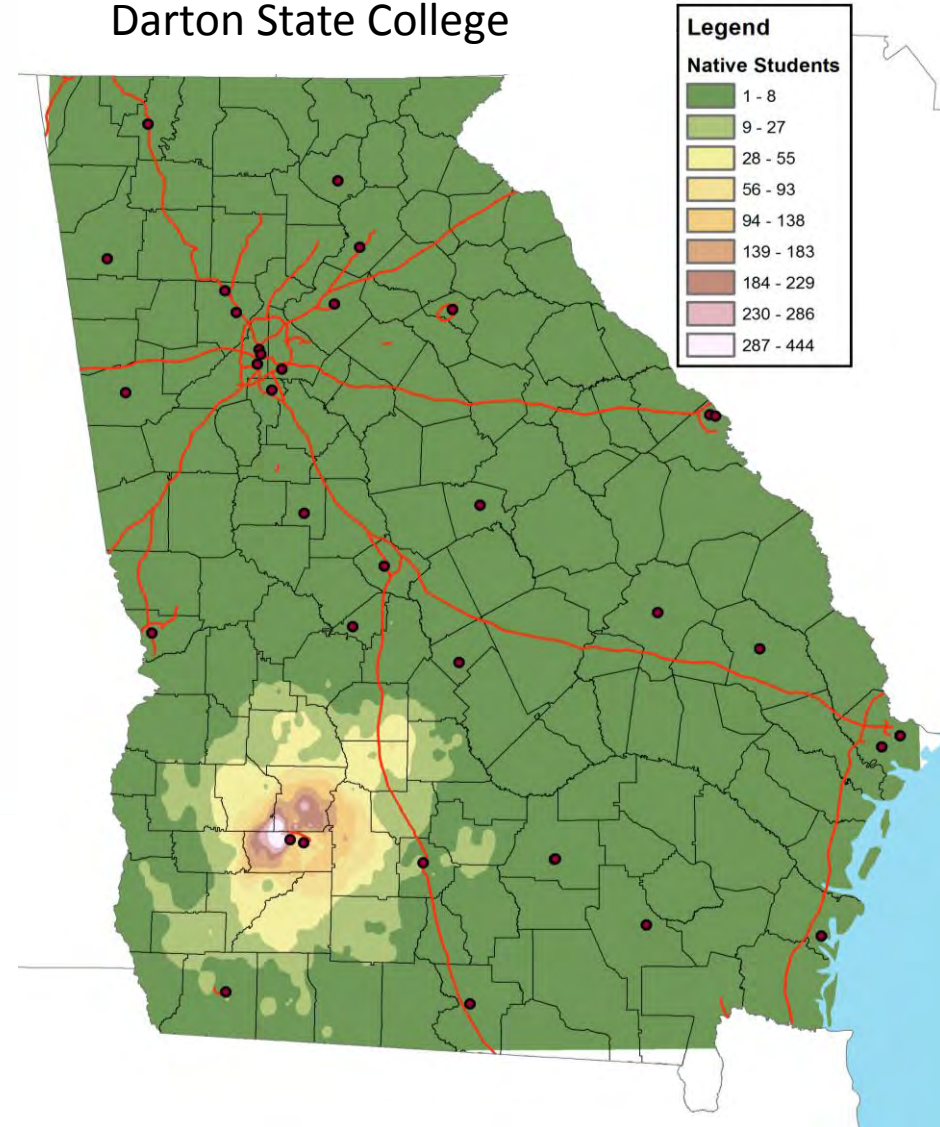
CARL
VINSON INSTITUTE
OF GOVERNMENT
The University of Georgia.

Catchment Area Analysis

Albany State University



Darton State College

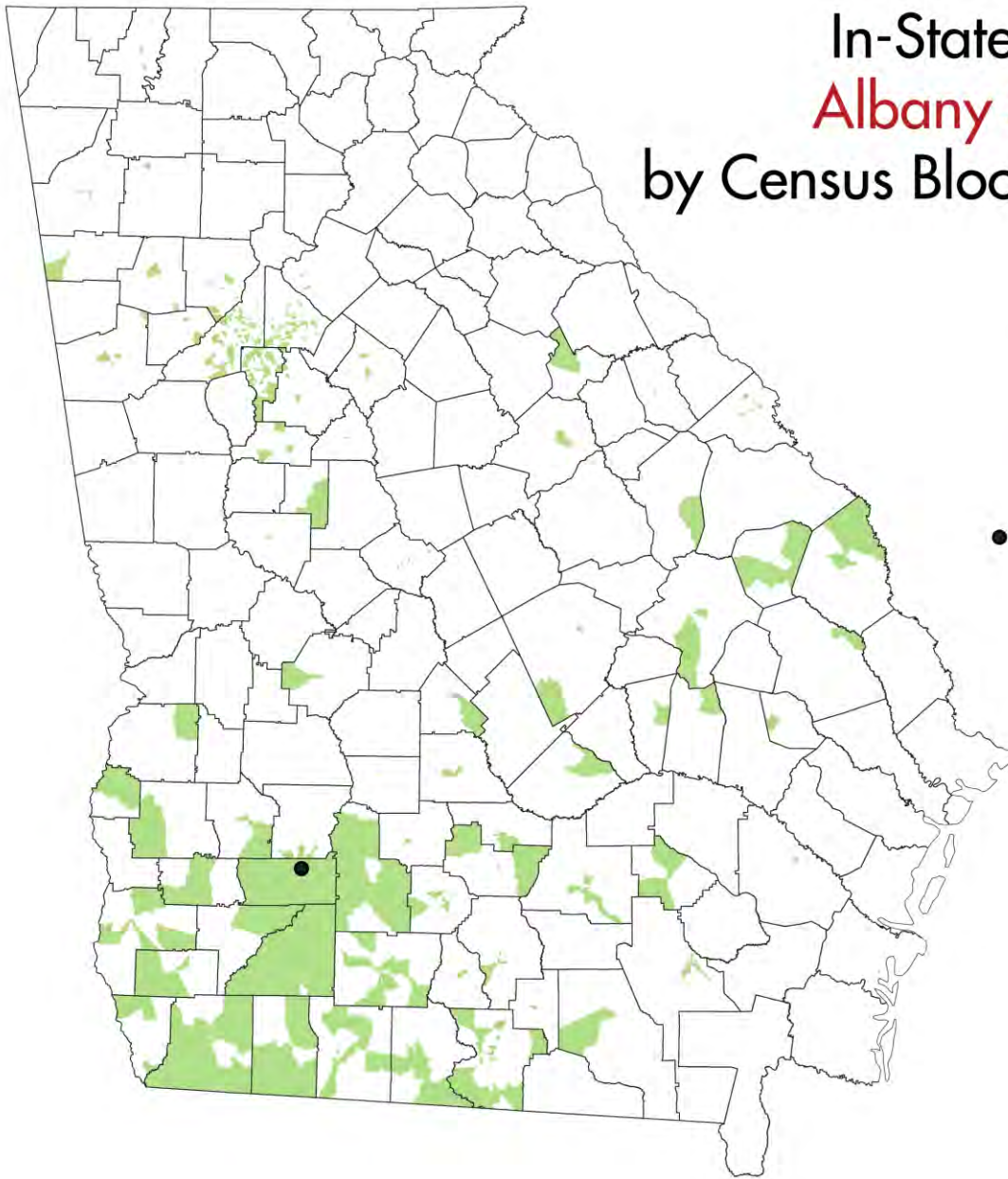


In-State Enrollment in **Albany State University** by Census Block Group, 2003–2014

Institution attended by the modal
of first-time freshmen from each
census block group

 Albany State University

● Albany

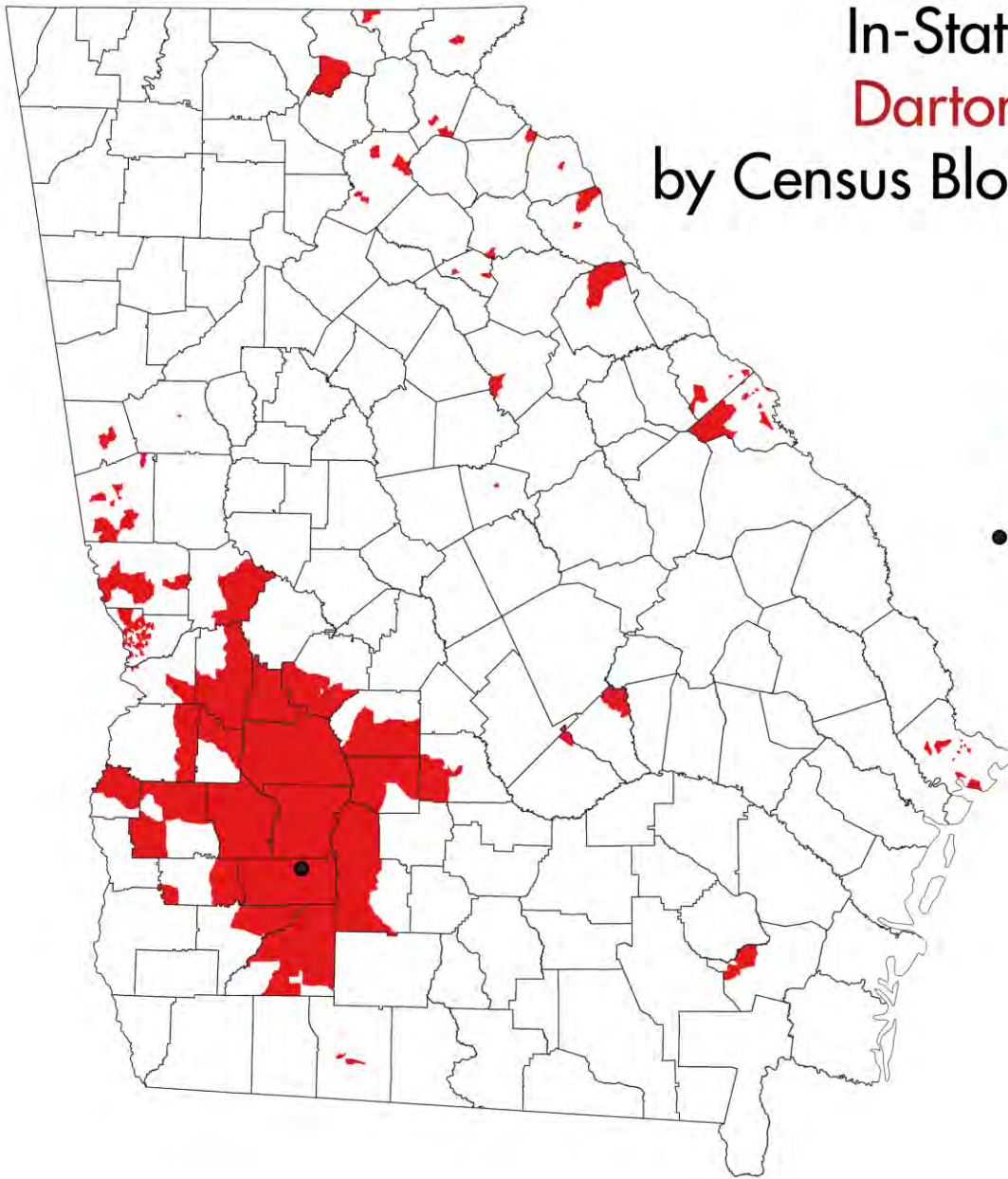


In-State Enrollment in Darton State College by Census Block Group, 2003–2014

Institution attended by the modal
of first-time freshmen from each
census block group

■ Darton State College

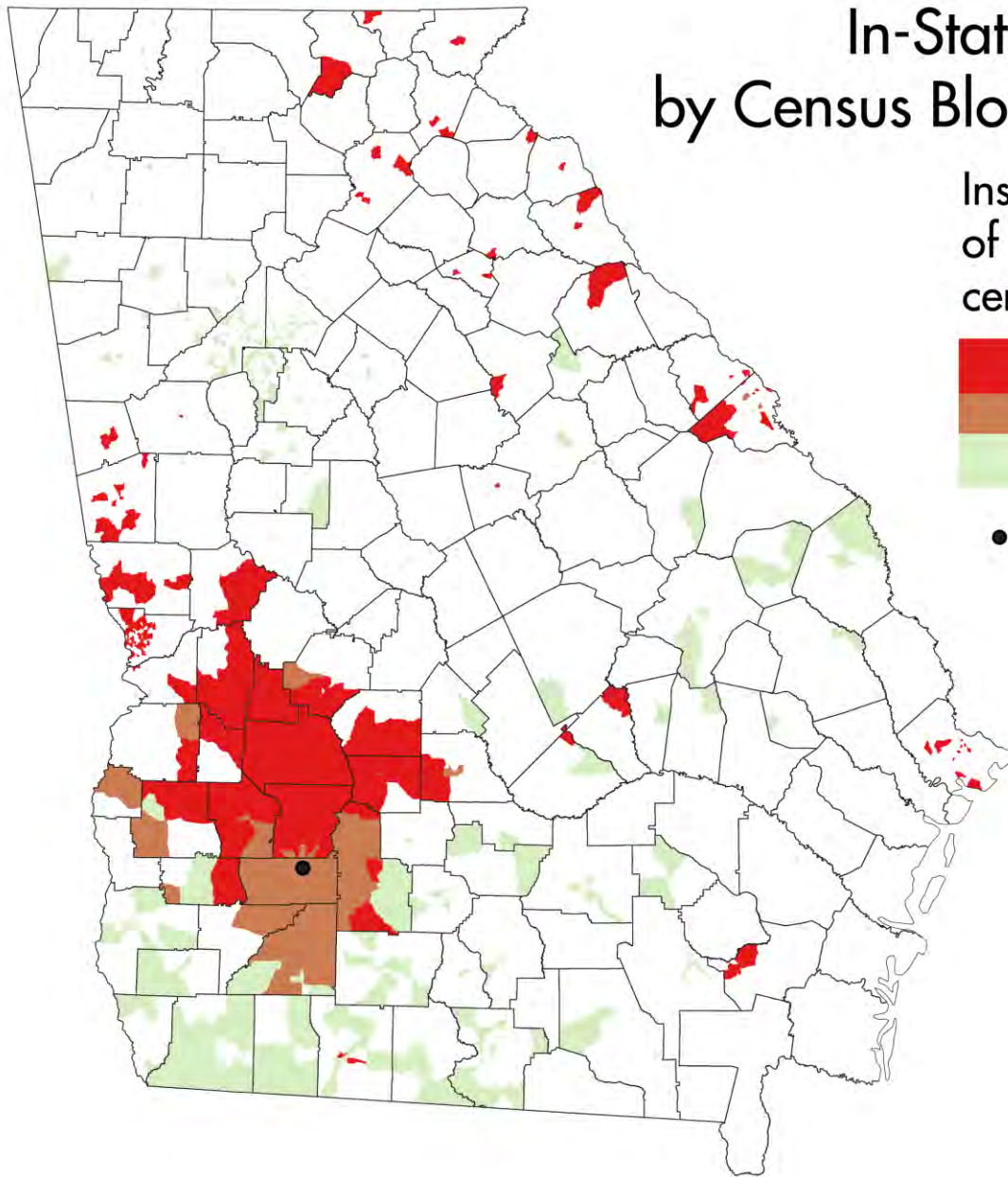
● Albany



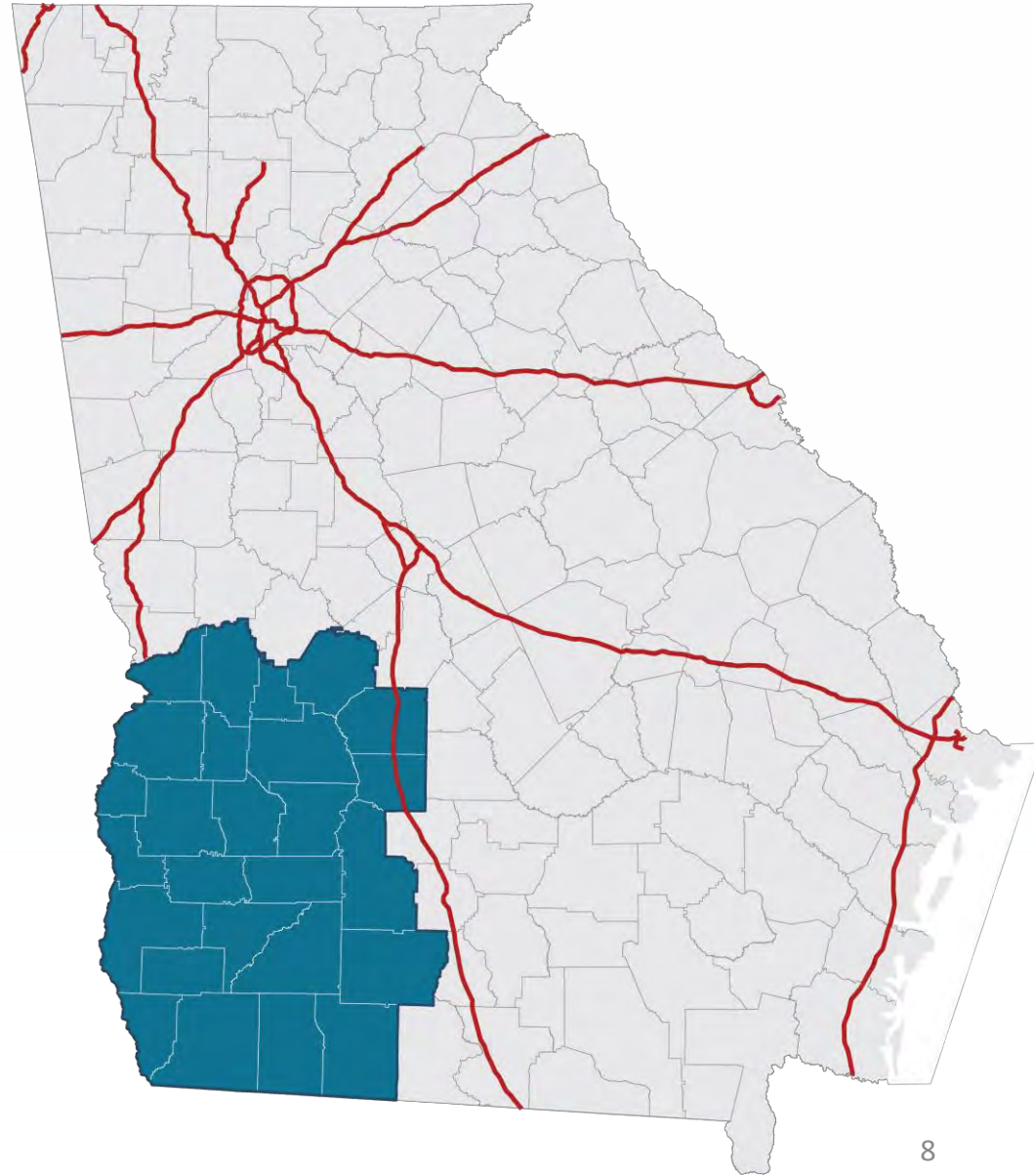
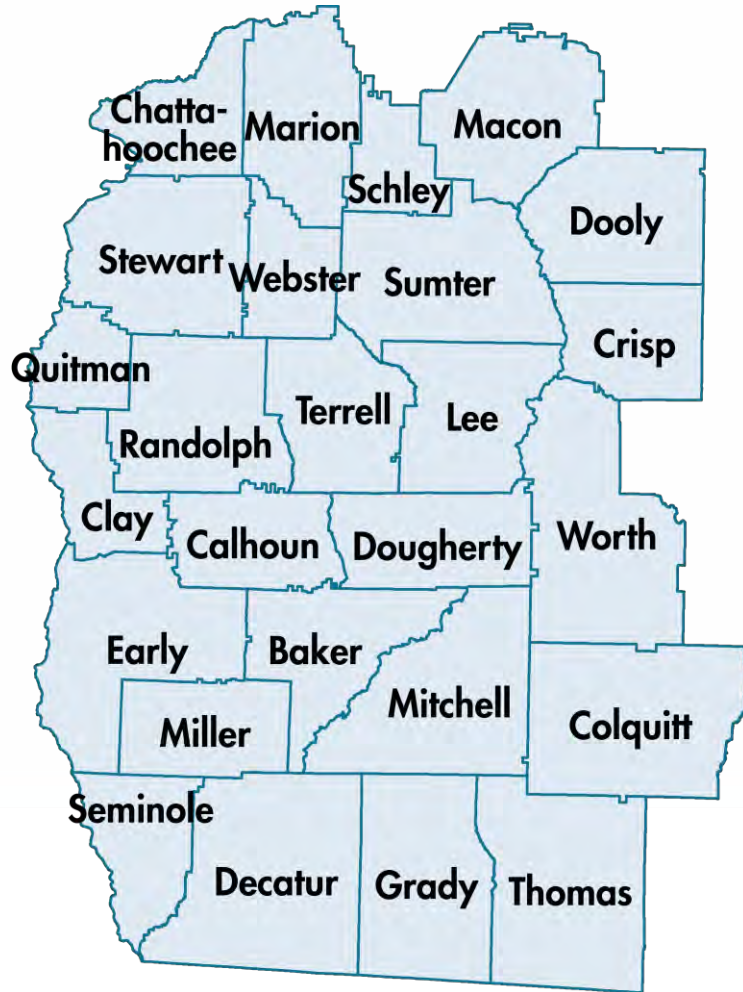
In-State Enrollment in by Census Block Group, 2003–2014

Institution attended by the modal
of first-time freshmen from each
census block group

-  Darton State College
-  Overlap
-  Albany State University
-  Albany



Enrollment-Based Region

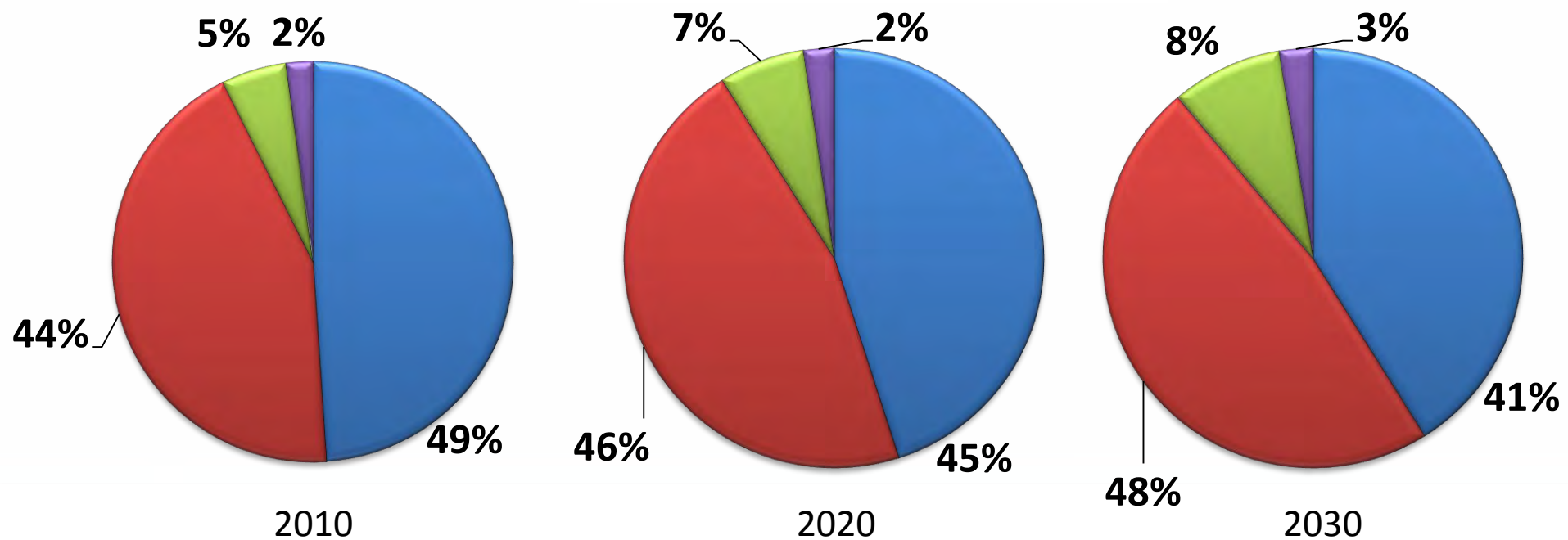


Population Change 2010-2014, 26 County Area

	Positive	Negative
Pop Growth	7	19
Nat Increase	20	6
Net Migration	2	24
Total Growth	-1.6%	

Projected Race Composition 2010-2030, 26 County Area

white black hispanic other



Source: OPB 2012 Projections

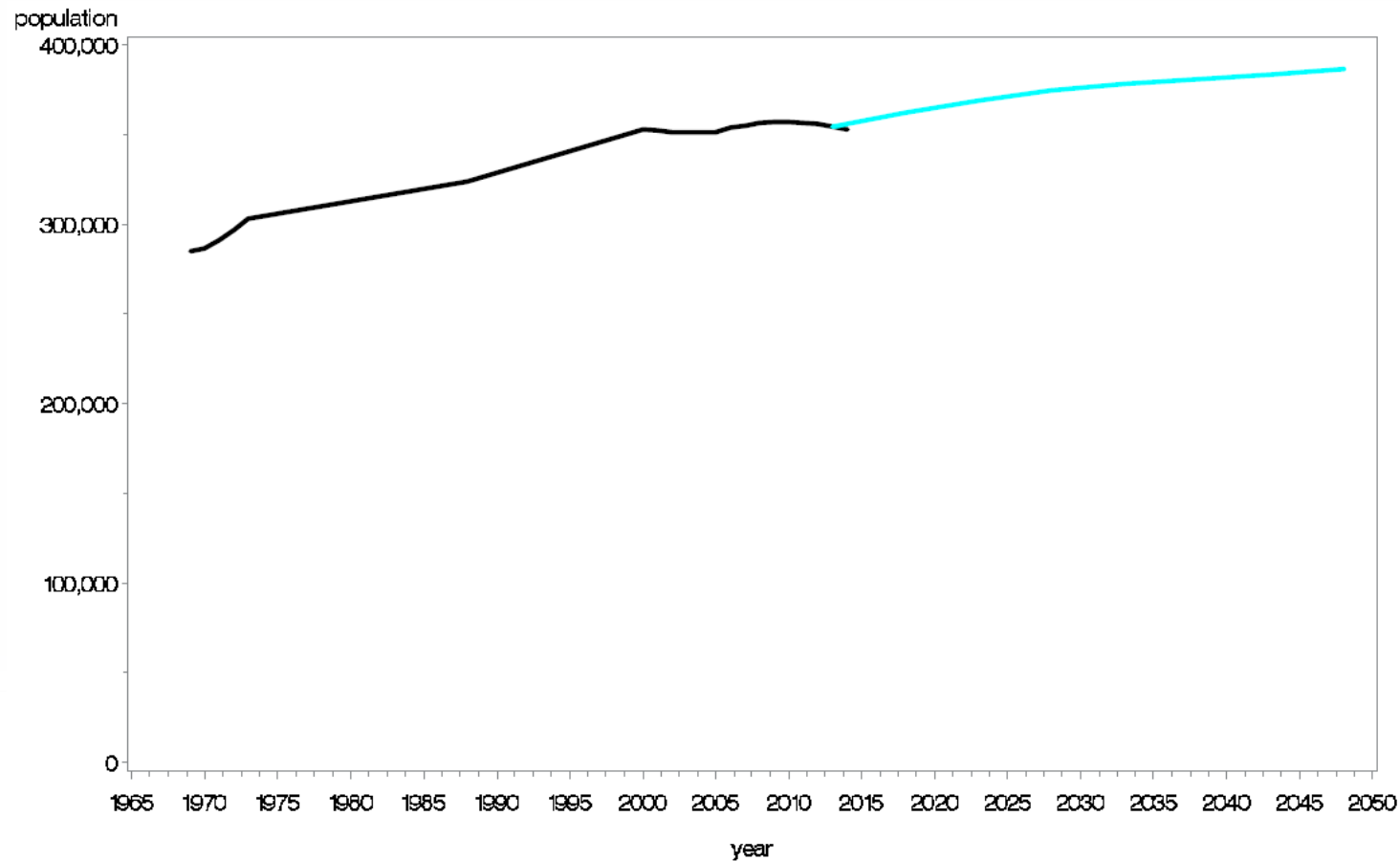
Projected Population Change 2010– 2030, 26 County Area

	% Increase 2010-2030
Under 25	3.6%
25–44	2.1%
45–64	4.2%
65+	70.8%

Source: OPB 2012 Projections

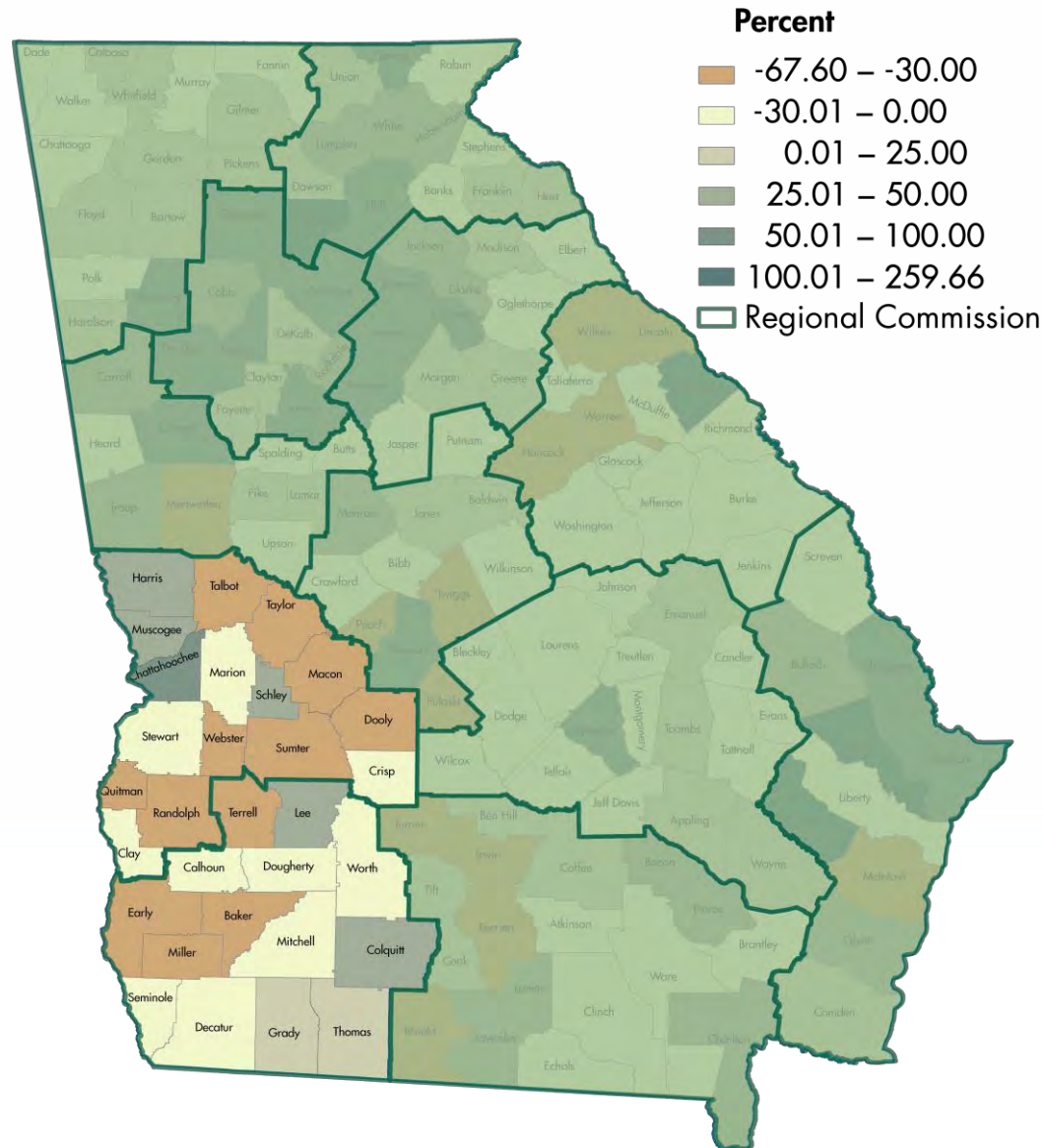
Population Trend Chart 1969 to 2050

Southwest Regional Commission



Change in Total Population, 2010-2050

Change in Total Population, 2010–2050



15- to 25-Year-Olds

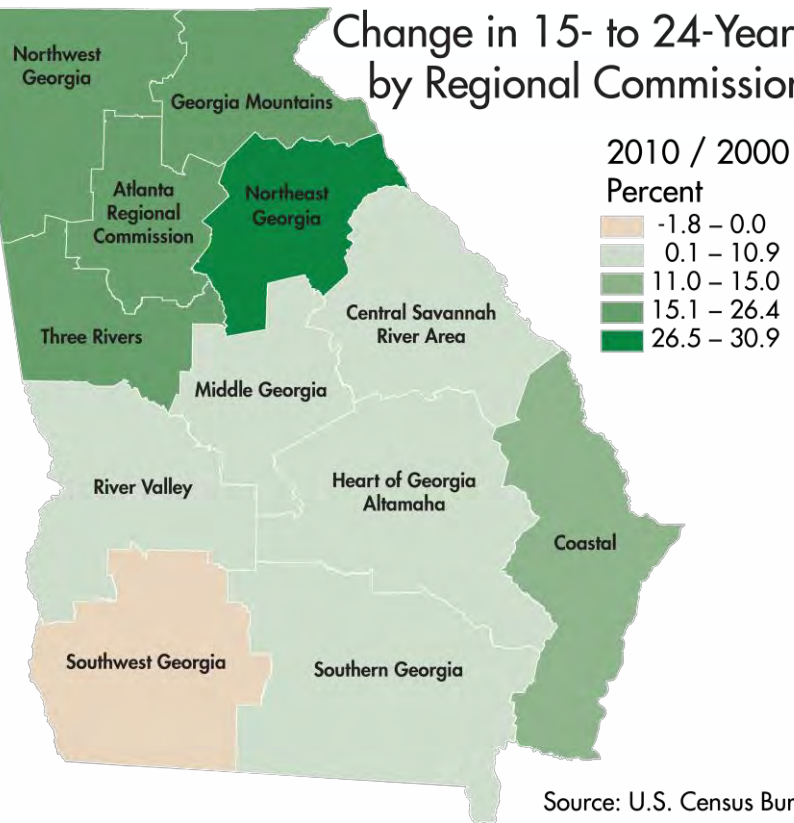
2000, 2010, 2020



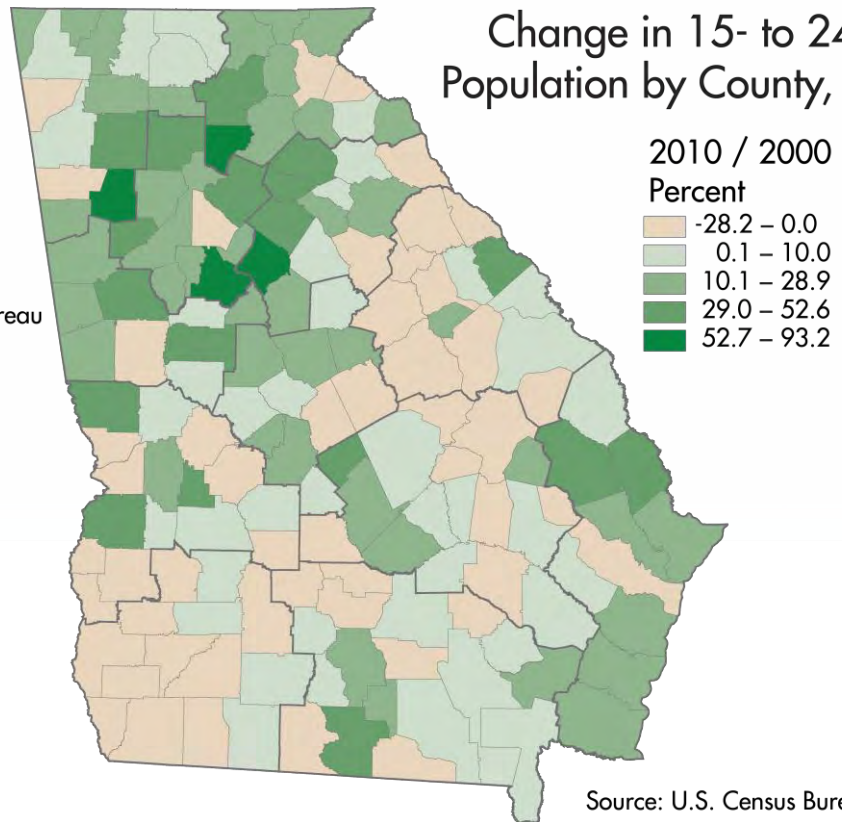
GeorgiaDATA™
More Information. Smarter Decisions.

CARL
VINSON INSTITUTE
OF GOVERNMENT
The University of Georgia.

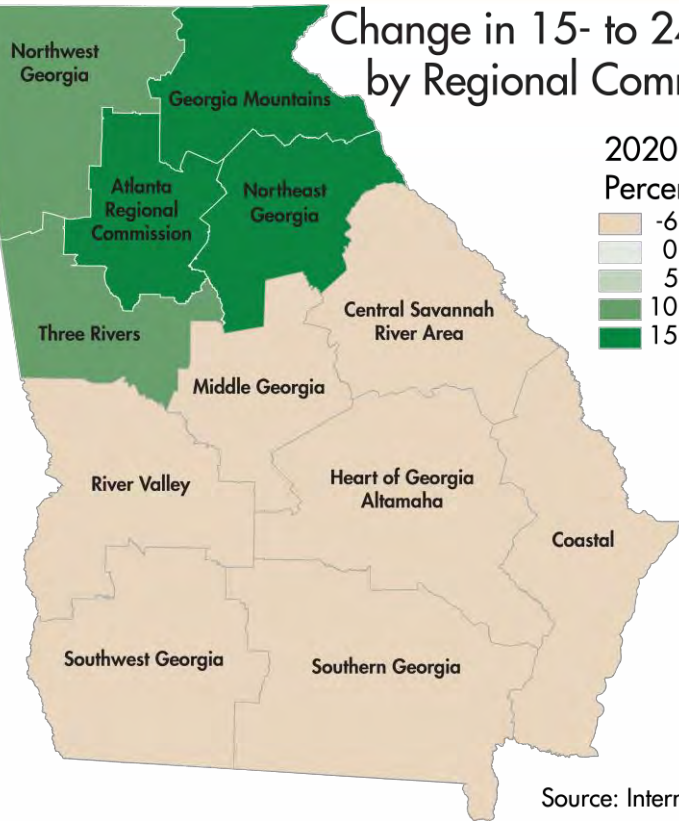
Change in 15- to 24-Year-Old Population by Regional Commission, 2000–2010



Change in 15- to 24-year-old Population by County, 2000–2010



Change in 15- to 24-Year-Old Population by Regional Commission, 2010–2020

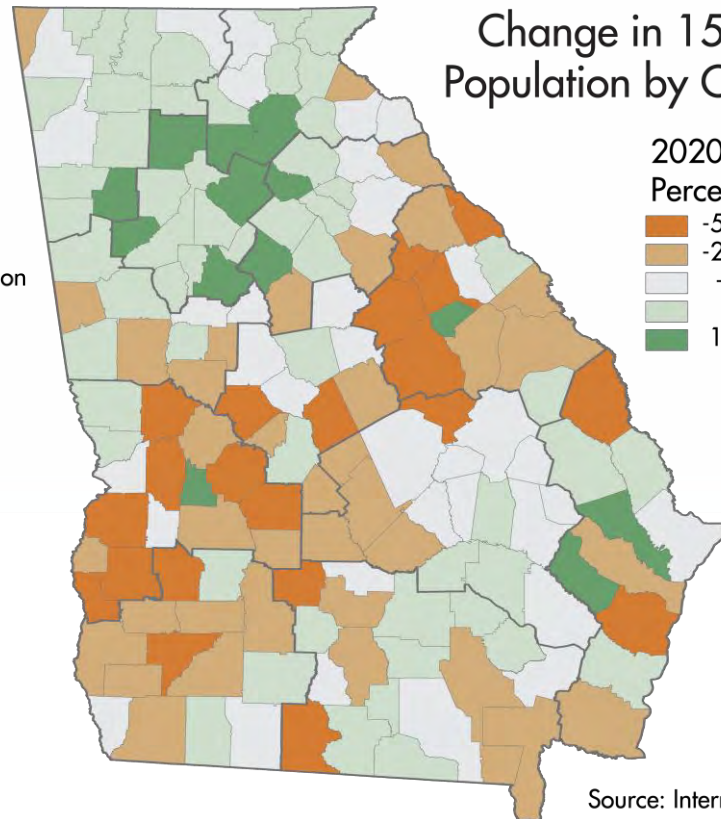


2020 / 2010
Percent

- 6.9 – 0.0
- 0.1 – 5.0
- 5.1 – 10.0
- 10.1 – 15.0
- 15.1 – 25.0

Source: Internal projection

Change in 15- to 24-Year-Old Population by County, 2010–2020



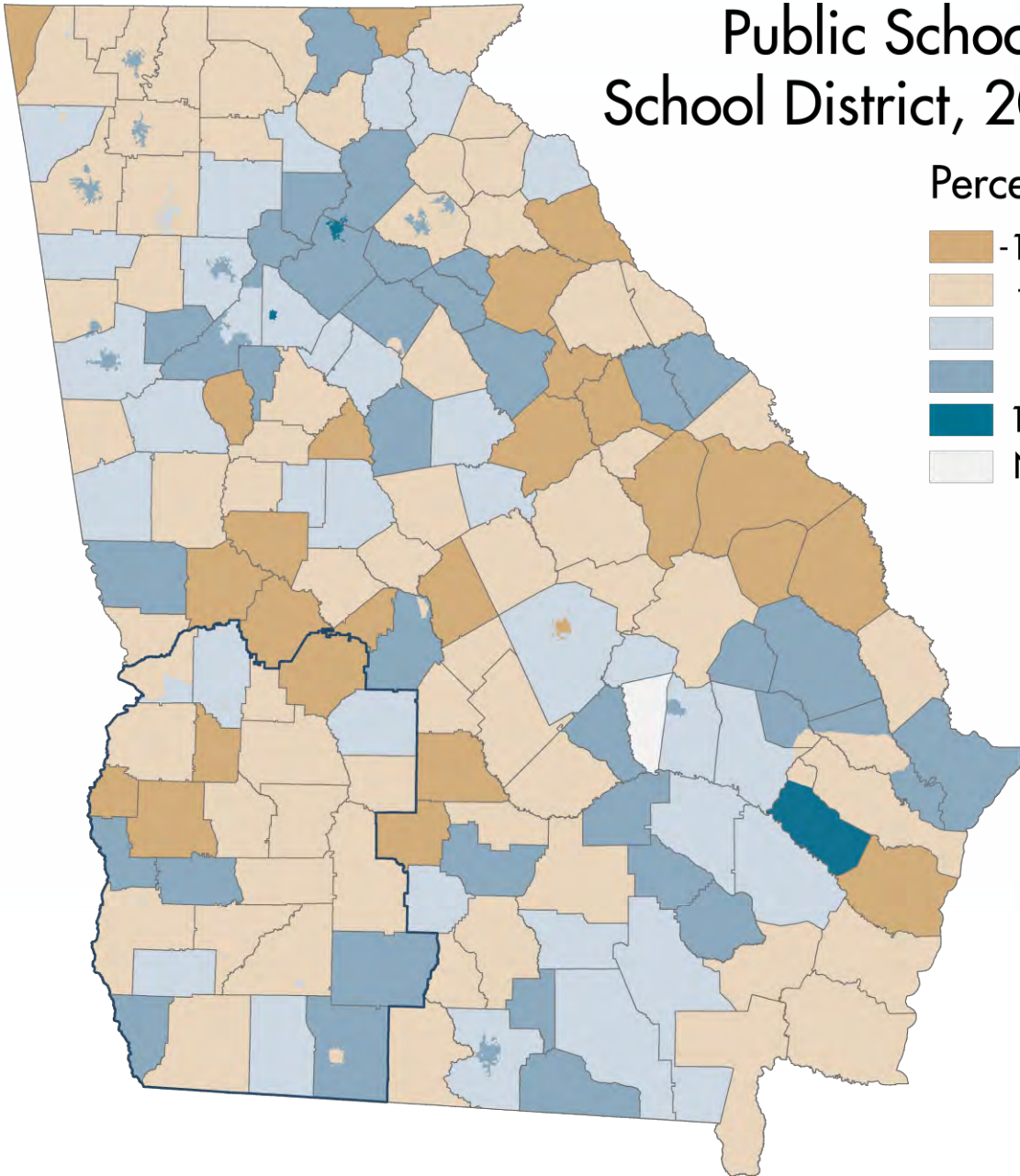
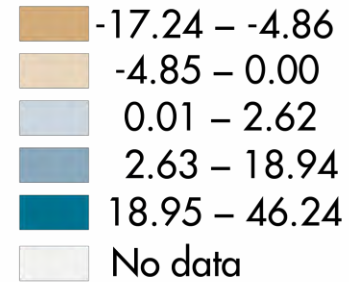
2020 / 2010
Percent

- 54.7 – -20.5
- 20.6 – -6.7
- 6.8 – 0.0
- 0.1 – 18.4
- 18.5 – 77.6

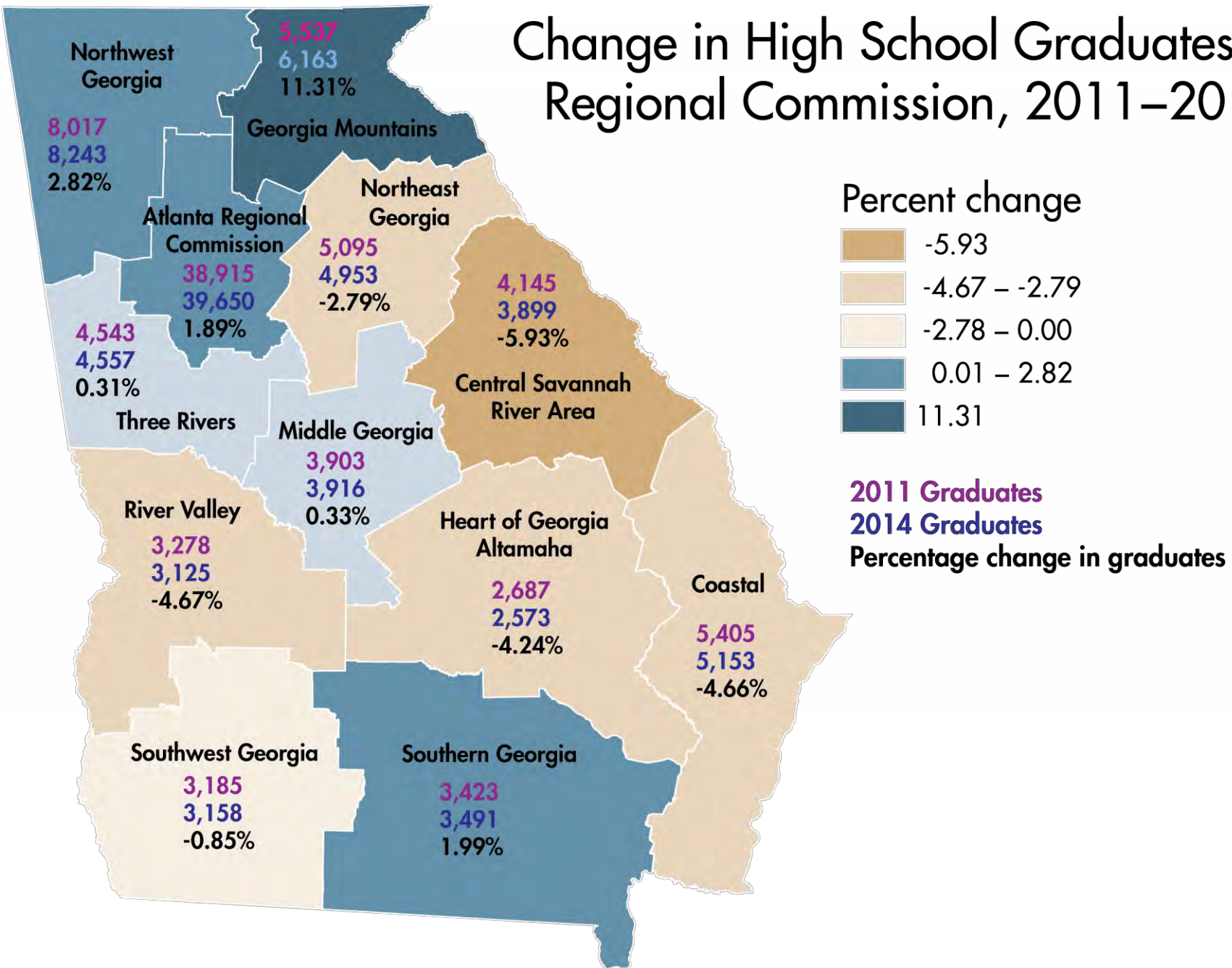
Source: Internal projection

Public School Enrollment by School District, 2010–11 to 2013–14

Percent Change



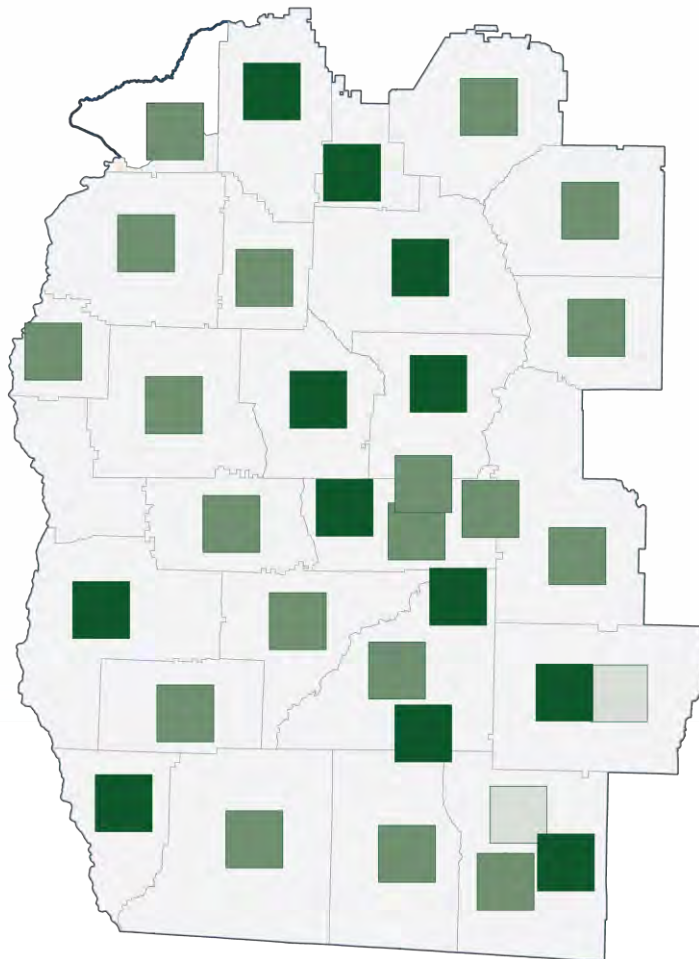
Change in High School Graduates by Regional Commission, 2011–2014



COMMUNITY INDICATORS

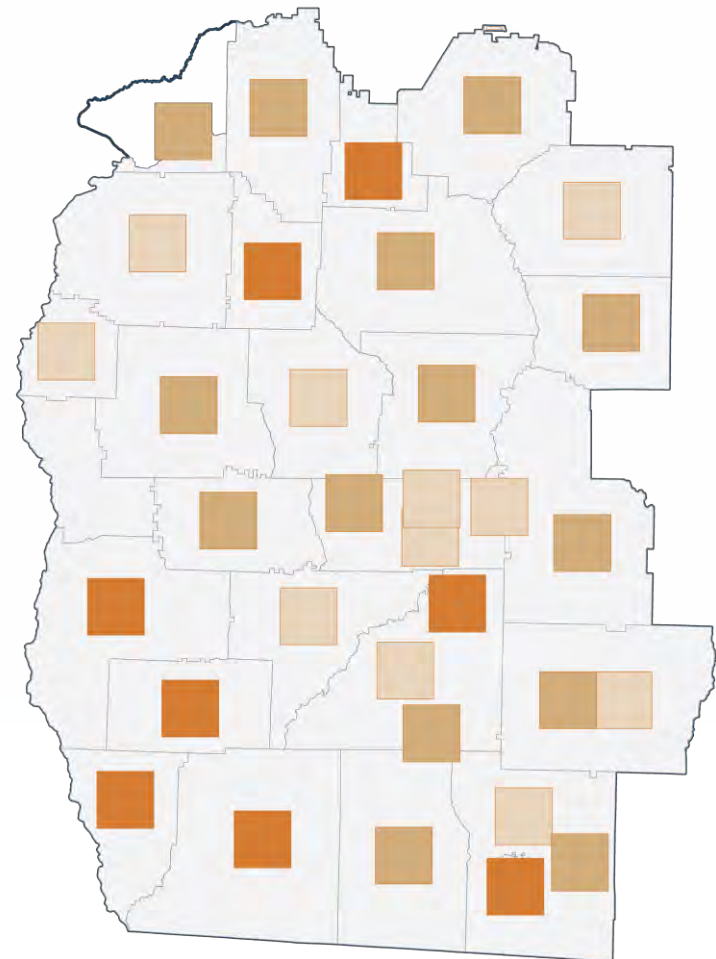
High School Graduates by School, 2015

Graduation Rate



47.0–60.0 60.1–85.0 85.1–97.8

HOPE-Eligible Graduates, Percent

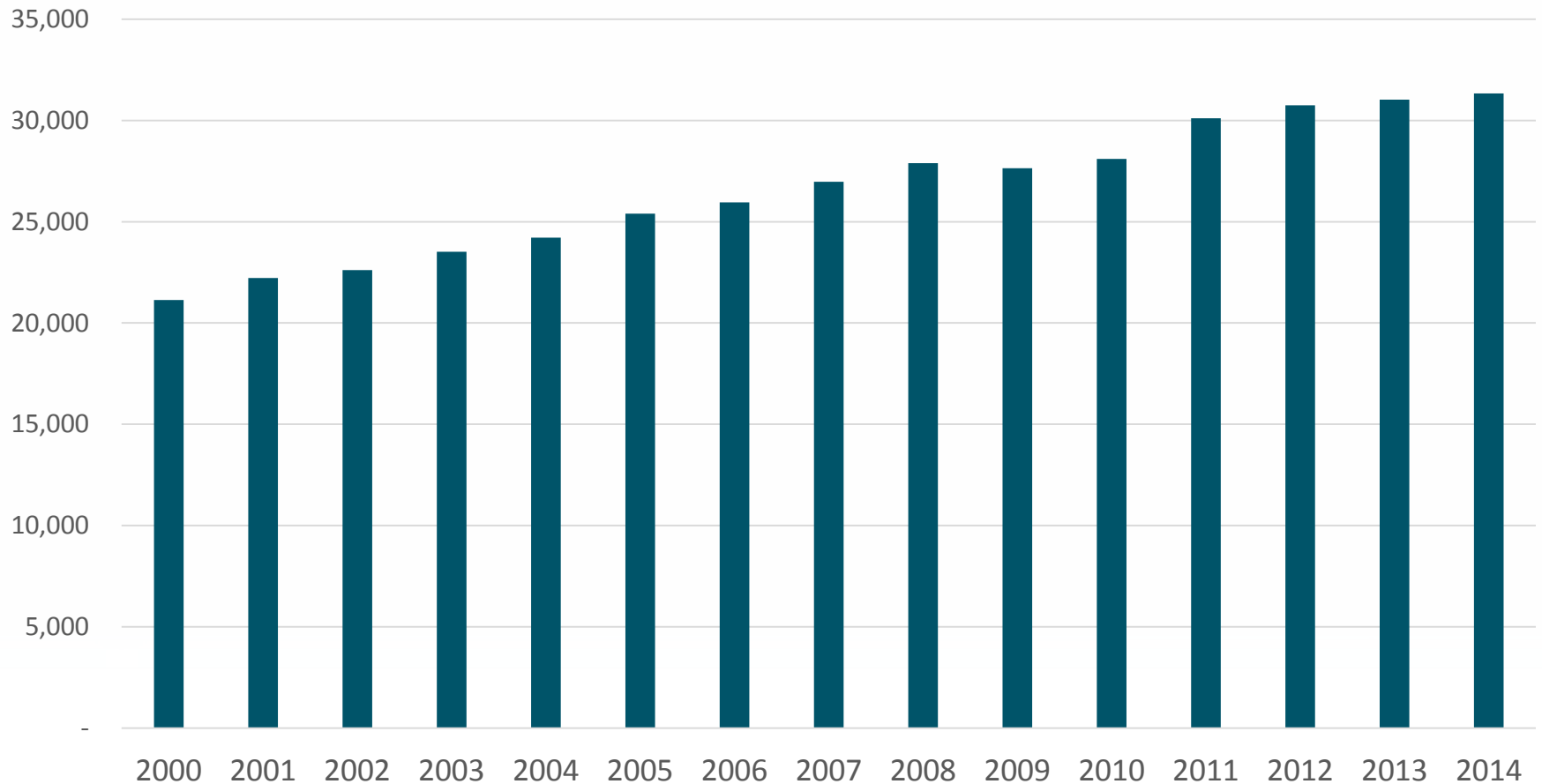


0–24.9 25.0–44.9 45.0–68.1

Graduates, 2015

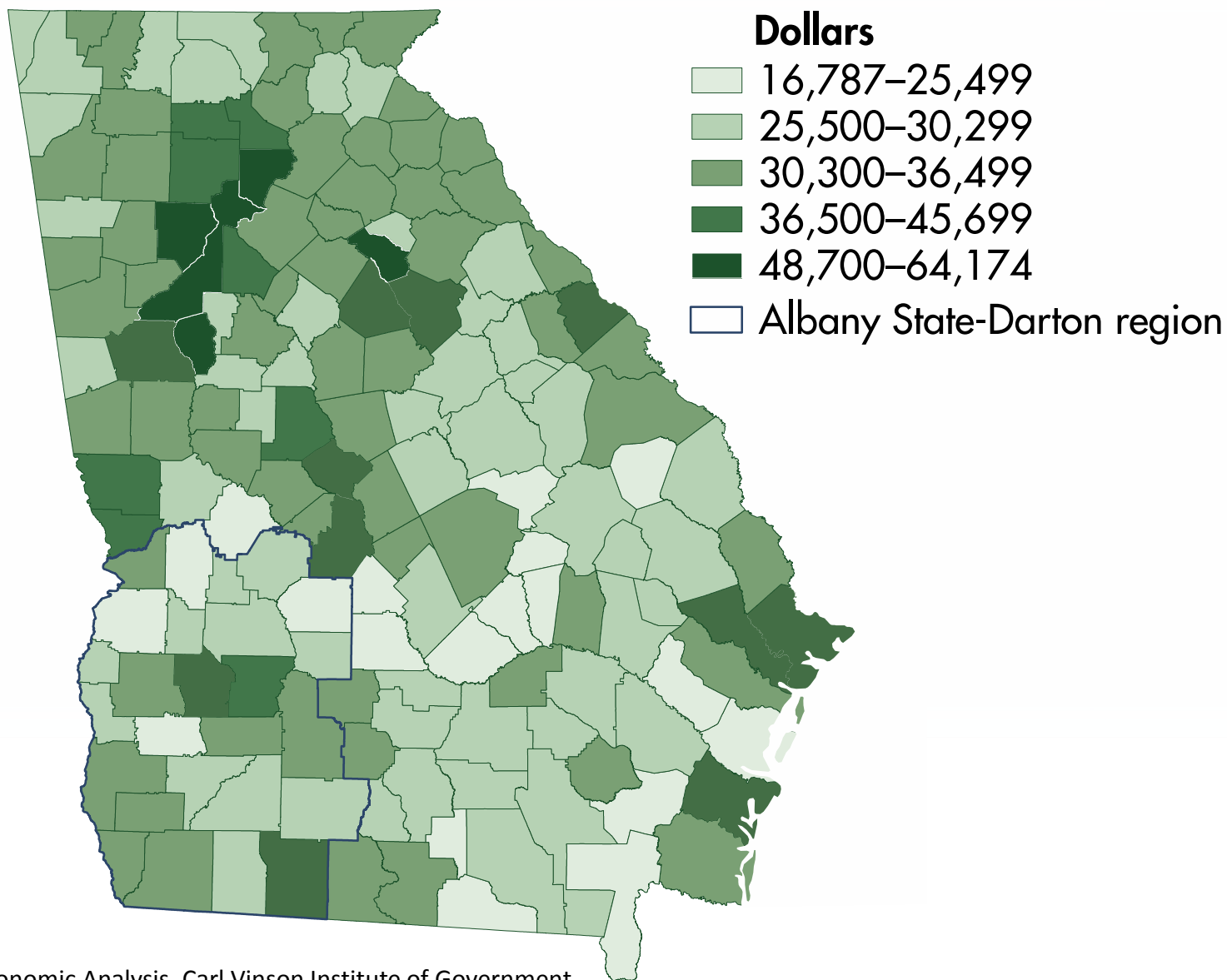
School District	School	Graduates	Graduation rate	Graduates	HOPE-eligible graduates	HOPE-eligible graduates, percent
Baker County	Baker County K12 School	20	80.0	20	0	0.0
Calhoun County	Calhoun County High School	29	82.9	32	10	31.3
Chattahoochee County	Chattahoochee County High School	85	83.3	85	26	30.6
Clay County	Students attend Randolph-Clay High School					
Colquitt County	Colquitt County Achievement Center	39	47.0	51	10	19.6
	Colquitt County High School	490	93.2	486	191	39.3
Crisp County	Crisp County High School	227	78.8	227	85	37.4
Decatur County	Bainbridge High School	305	82.0	309	149	48.2
Dooly County	Dooly County High School	64	74.4	64	0	0.0
Dougherty County	Albany High School	155	79.1	154	36	23.4
	Dougherty Comprehensive High School	154	71.0	140	19	13.6
	Monroe High School	202	84.2	200	33	16.5
	Westover High School	261	92.6	238	103	43.3
Early County	Early County High School	135	89.4	136	68	50.0
Grady County	Cairo High School	237	83.2	244	89	36.5
Lee County	Lee County High School	399	87.1	409	171	41.8
Macon County	Macon County High School	100	76.9	102	32	31.4
Marion County	Marion County Middle/High School	96	90.6	96	40	41.7
Miller County	Miller County High School	60	80.0	61	36	59.0
Mitchell County	Baconton Community Charter School	45	97.8	47	32	68.1
	Mitchell County High School	59	78.7	61	13	21.3
Quitman County	Quitman County High School	14	66.7	14	1	7.1
Randolph County	Randolph-Clay High School	68	76.4	69	23	33.3
Schley County	Schley Middle High School	87	90.6	88	53	60.2
Seminole County	Seminole County Middle/High School	104	91.2	105	57	54.3
Stewart County	Stewart County High School	26	76.5	27	6	22.2
Sumter County	Americus Sumter County High South	250	86.8	254	65	25.6
Terrell County	Terrell High School	91	93.8	90	18	20.0
Thomas County	Bishop Hall Charter School	27	55.1	44	6	13.6
	Thomas County Central High School	273	92.9	288	120	41.7
Webster County	Webster County High School	32	80.0	34	16	47.1
Worth County	Worth County High School	177	76.3	178	68	38.2
Pelham City	Pelham High School	92	85.2	94	25	26.6
Thomasville City	Thomasville High School	151	80.8	154	82	53.3

Southwest Georgia Per Capita Personal Income

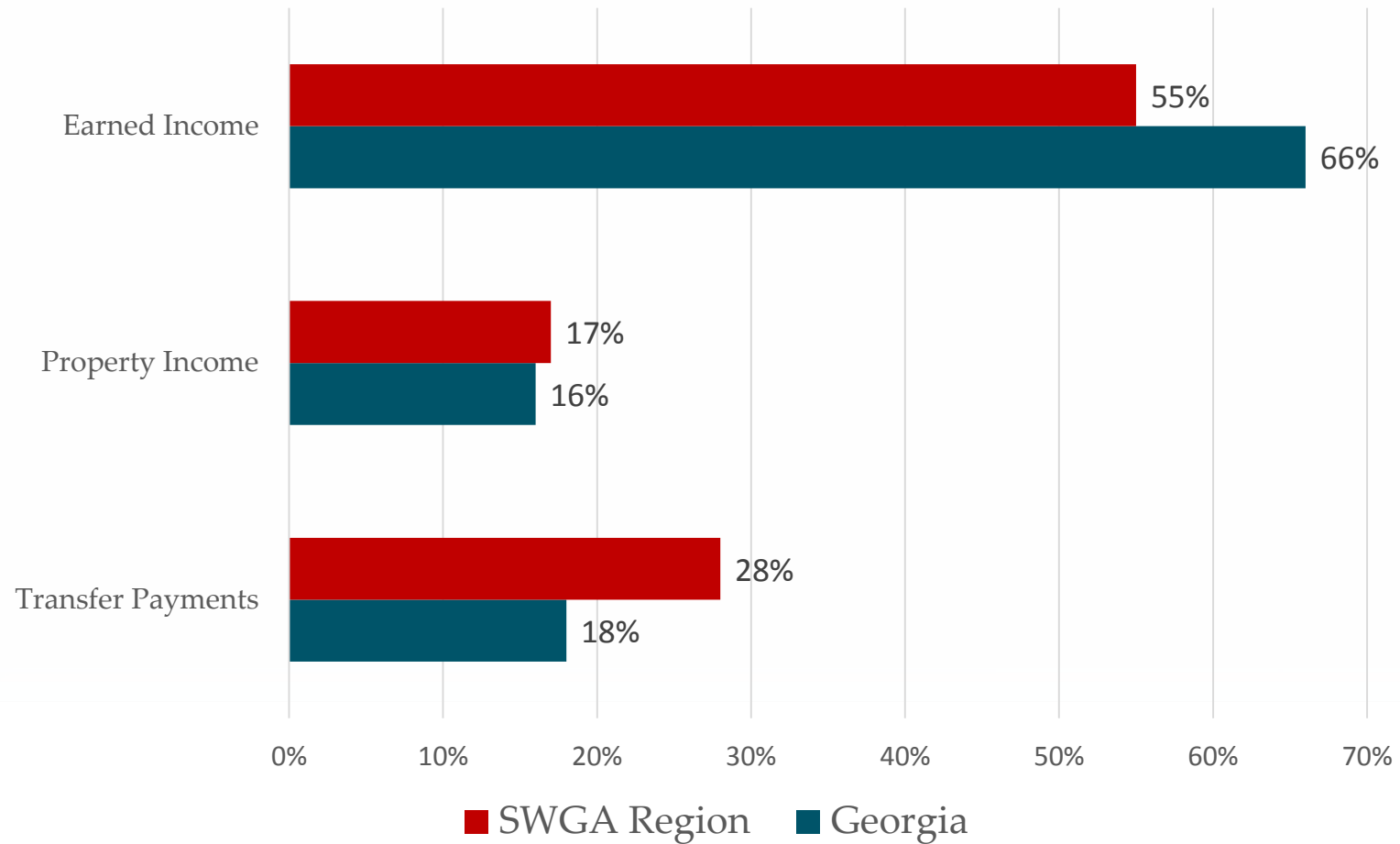


Source: Bureau of Economic Analysis, Carl Vinson Institute of Government

Per Capita Personal Income, 2014

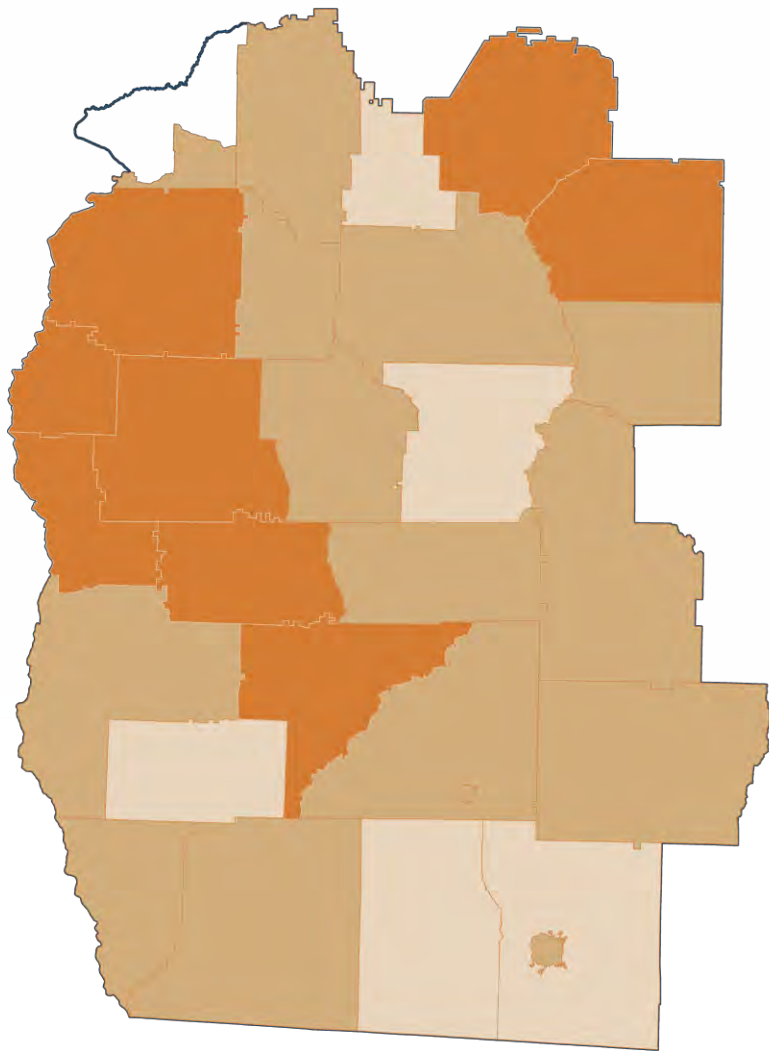


Major Components of Total Personal Income

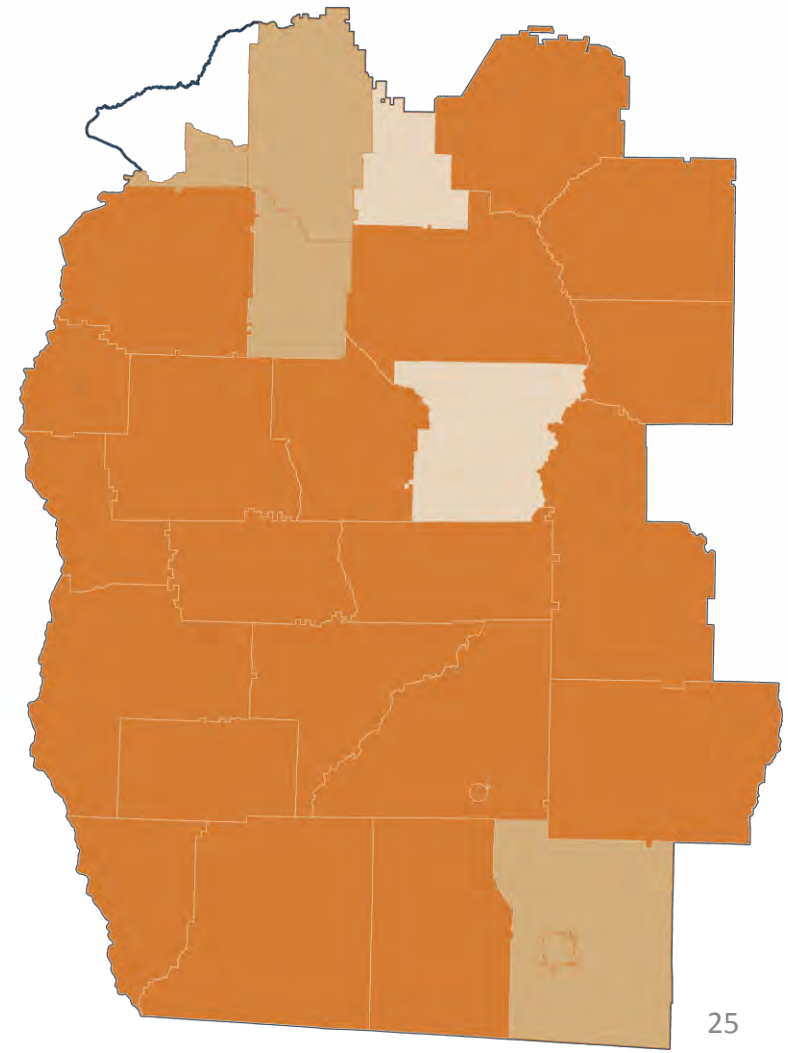


Students Eligible for Free and Reduced Lunch by School District

2004–2005

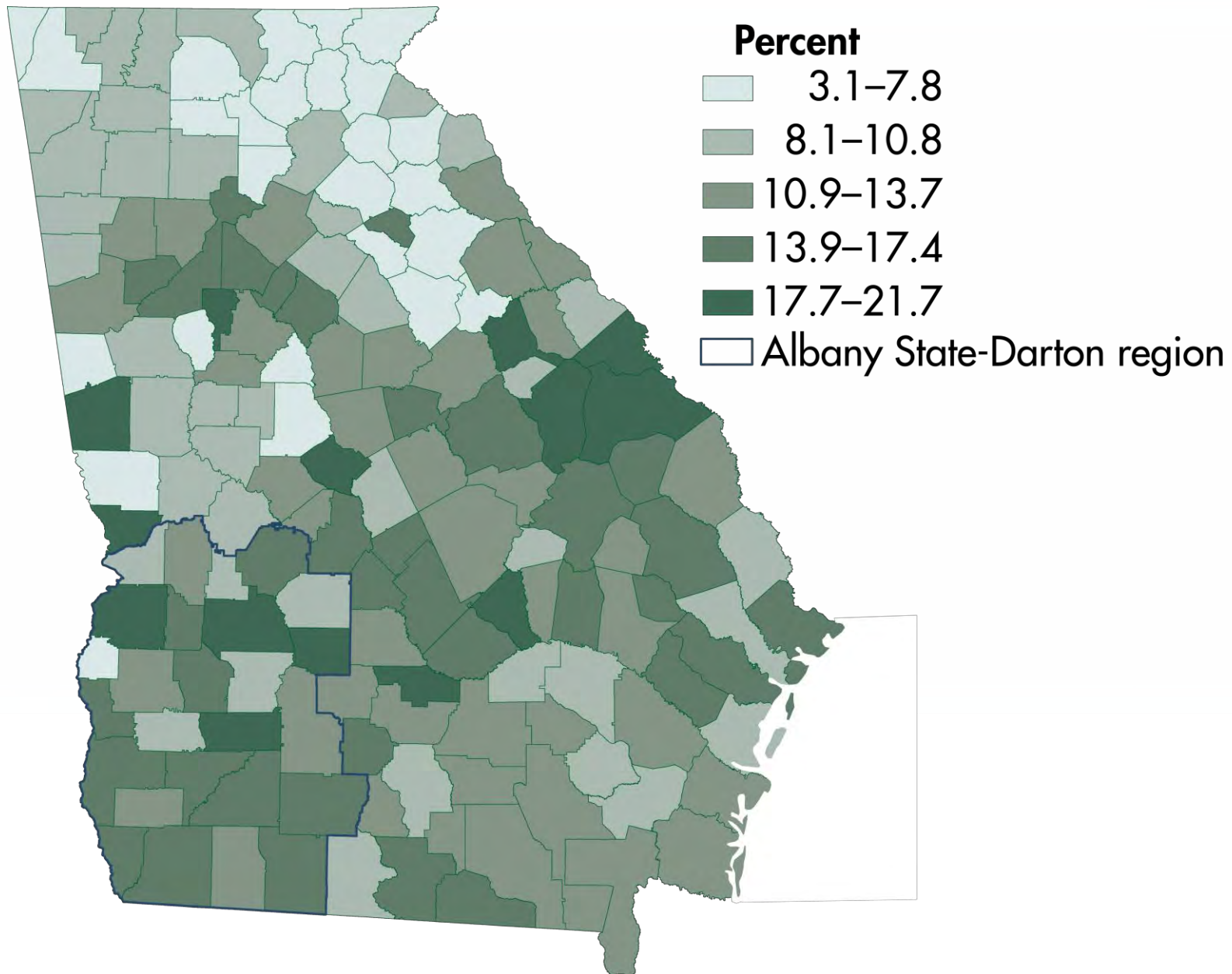


2014–2015



Percent
32–60
61–80
81–100
Region

Female Householder with Children Under 18, 2009-13



Poverty

Poverty is defined as the weighted average income for a family of four of \$24,230

2004

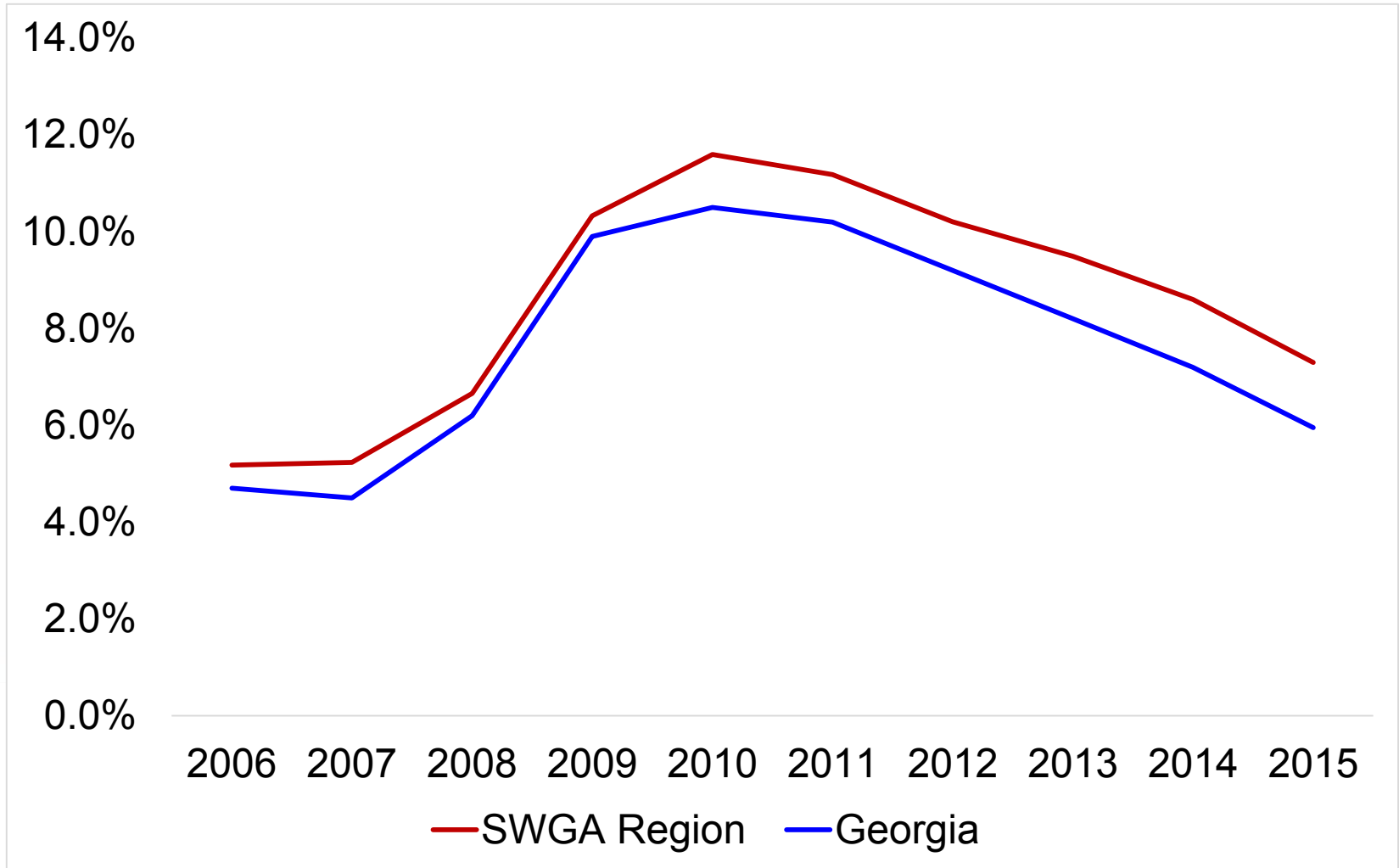
Percent

- 5.3–10.0
- 10.1–15.0
- 15.1–20.0
- 20.1–30.0
- 30.1–39.4

2014

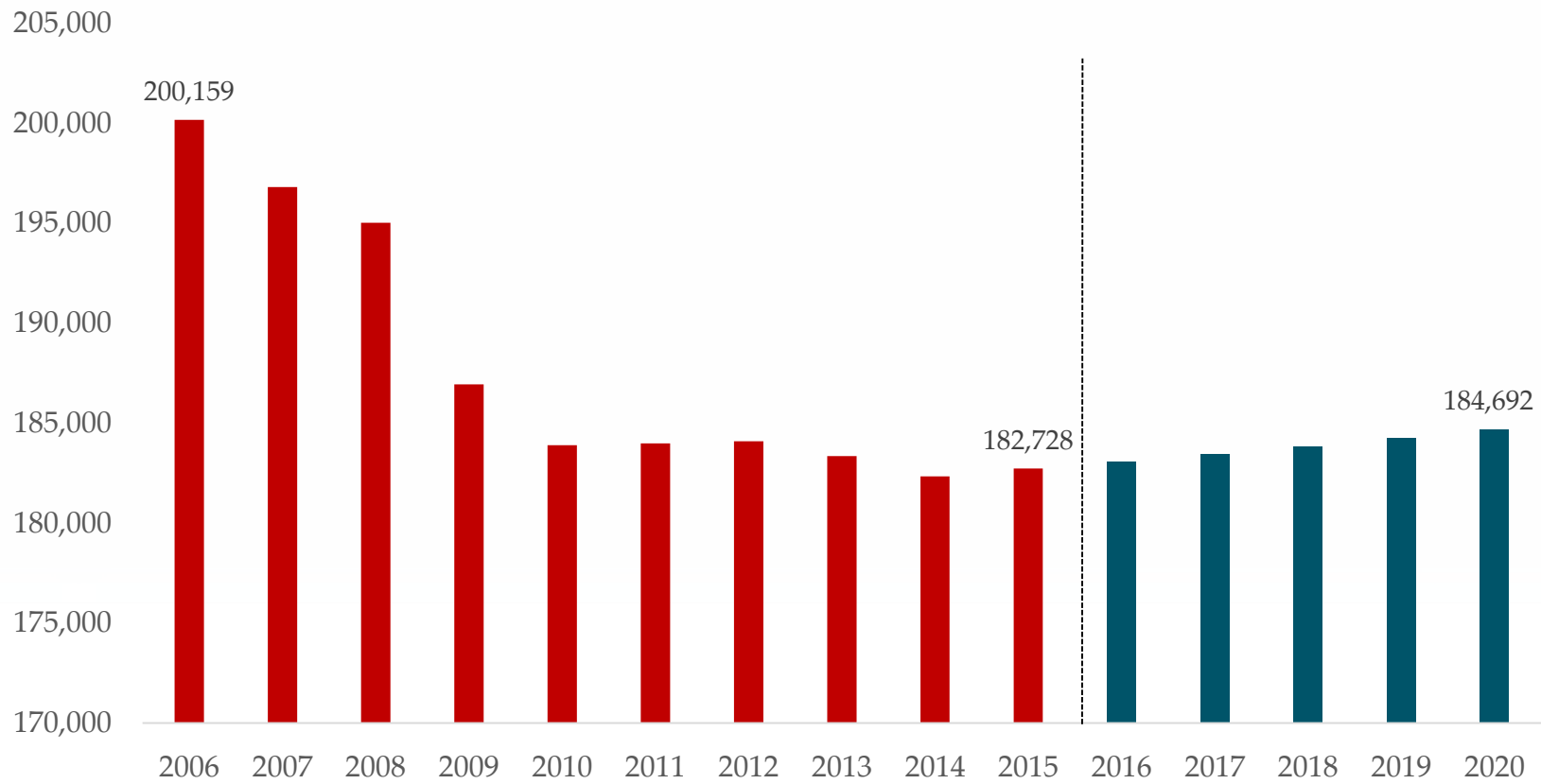
 Albany State-Dartmouth region

Unemployment Trend (Annual Average)



Source: Bureau of Labor Statistics, Carl Vinson
Institute of Government

Employment Historical Trend & Projections



Source: Economic Modeling Specialists Inc.,

County and High School of Origin

HIGHER EDUCATION MARKET

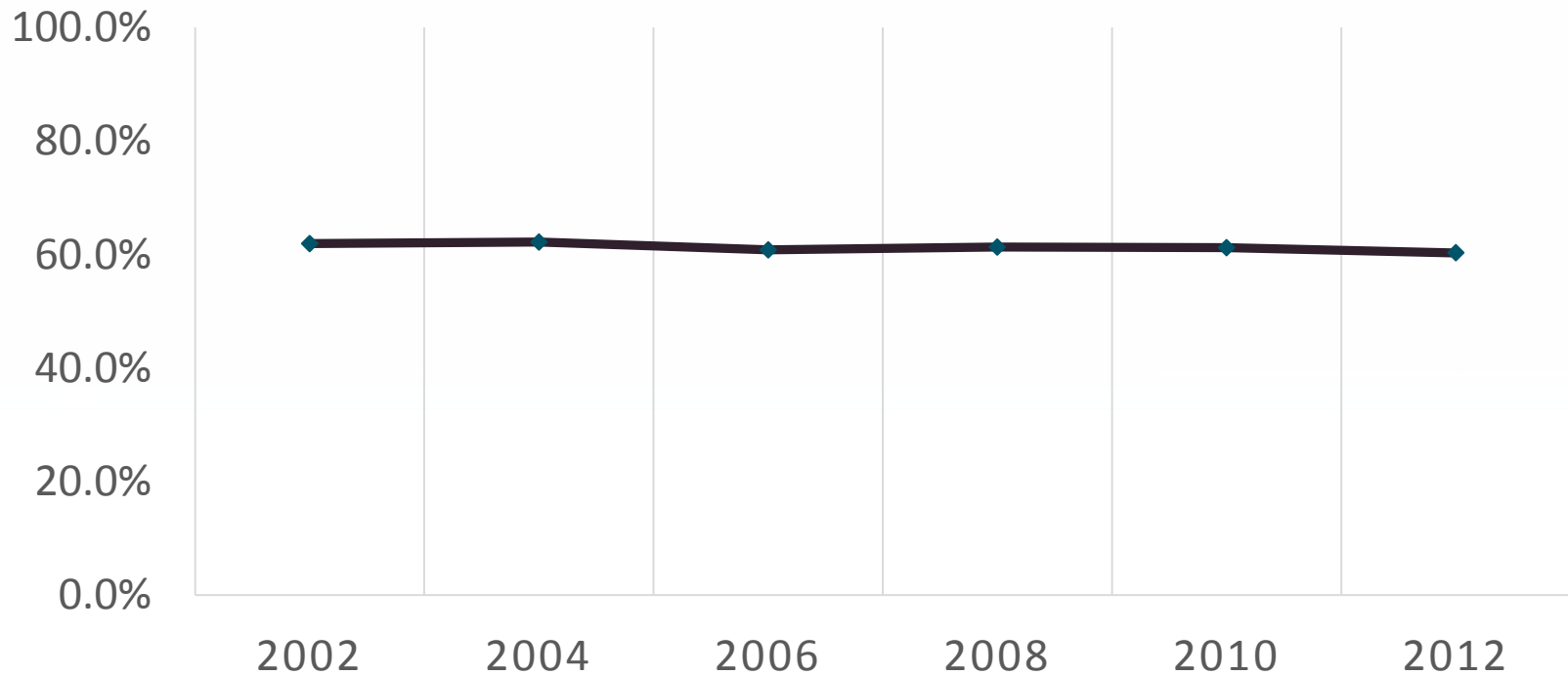


GeorgiaDATA™
More Information. Smarter Decisions.

CARL
VINSON INSTITUTE
OF GOVERNMENT
The University of Georgia.

60% of recent Georgia high school graduates enroll in a USG institution

USG SHARE OF GEORGIA HIGH SCHOOL RECENT GRADUATES



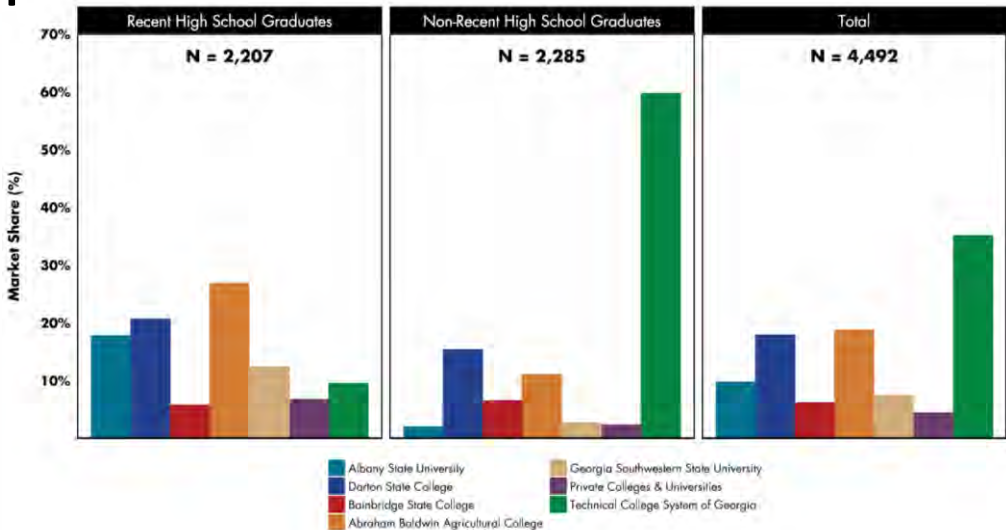
Source: IPEDS

Share of Georgia Resident First-Time Freshmen enrolling in a higher education institution in southwest Georgia

2002

- **Albany State** had 18% of the recent Georgia high school market in 2002.
- **Darton State** has consistently captured 20% of the recent Georgia high school FTF.
- **TCSG** dominates as the destination for non-recent high school graduates followed by Darton State and ABAC.
- Overall in Southwest Georgia, TCSG, Darton and ABAC enrolled the most Georgia FTF in 2002

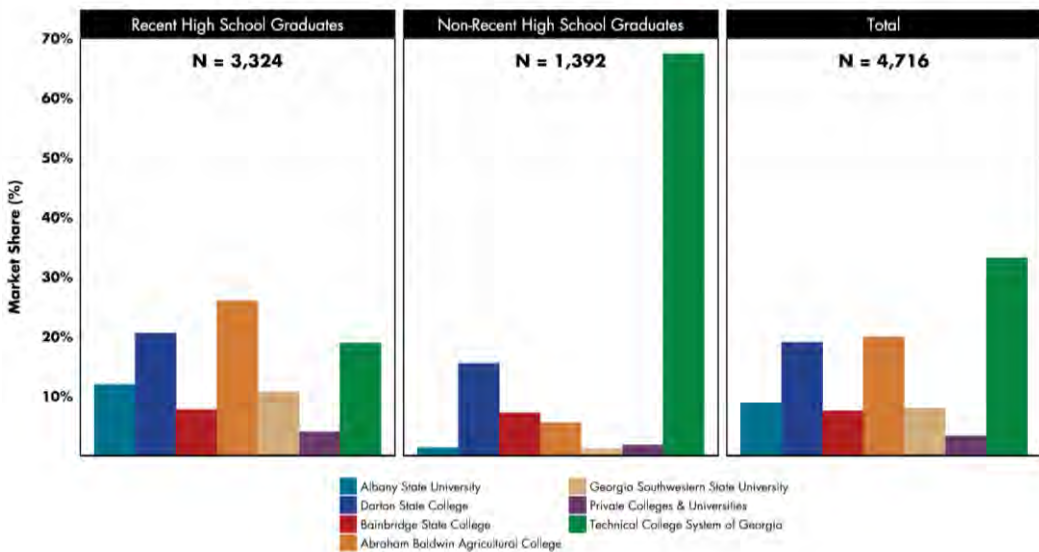
Georgia Resident FTF Undergraduates Enrollment in Southwest Georgia Fall 2002



2014

- **Albany State** has 12% of the recent Georgia high school market in 2014.
- **Darton State** has consistently captured 20% of the recent Georgia high school FTF.
- **TCSG** increased its share of recent FTF from 10% to 19% in 2014. TCSG dominates as the destination for non-recent high school graduates.
- Overall in southwest Georgia, TCSG, Darton and ABAC enrolled the most Georgia FTF in 2014.

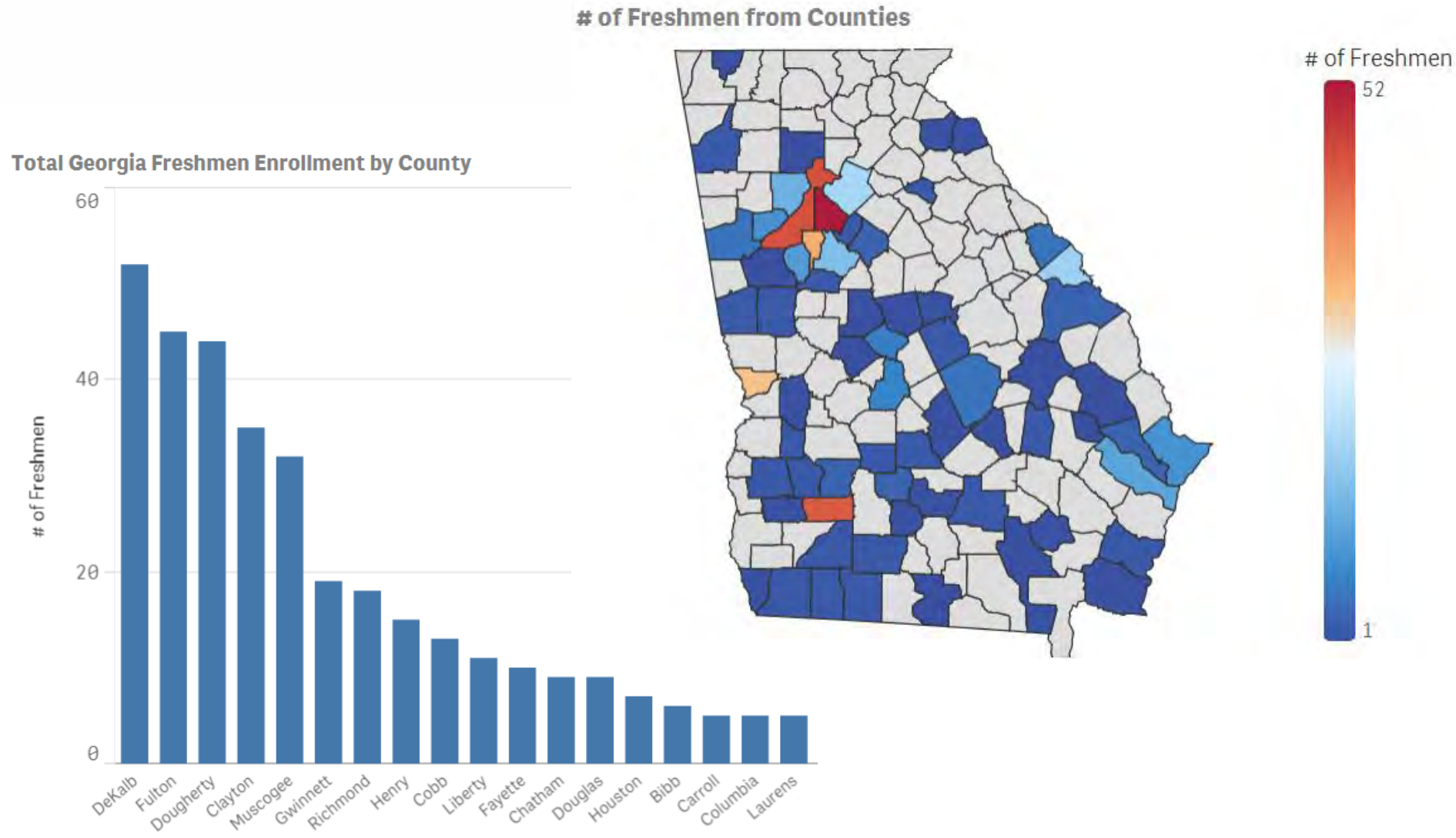
Georgia Resident FTF Undergraduates Enrollment in Southwest Georgia Fall 2014



Albany State University

Fall 2014 Georgia First-Time Freshman Enrollment

(Bar chart shows counties sending 5 or more per county)

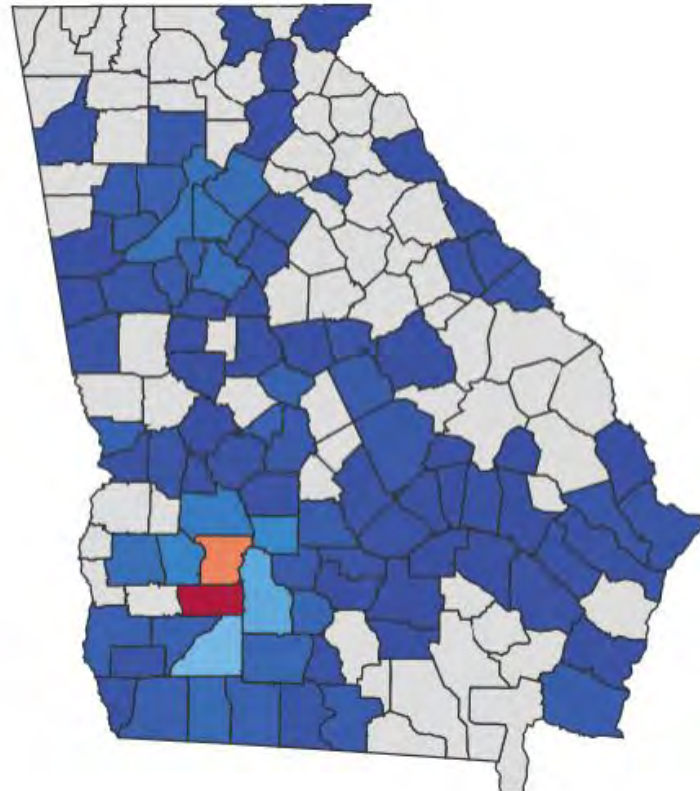


Darton State

Fall 2014 Georgia First-Time Freshmen Enrollment

(Bar chart shows counties sending 9 or more FTF)

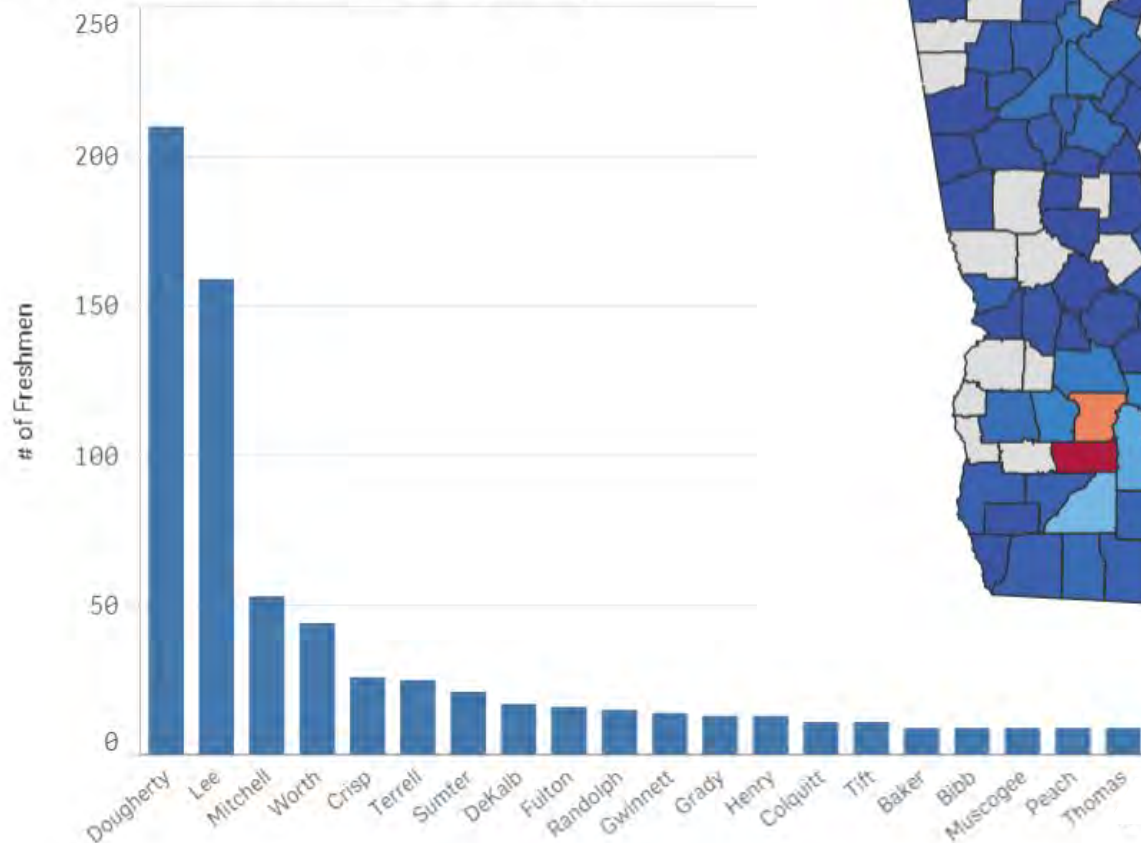
of Freshmen from Counties



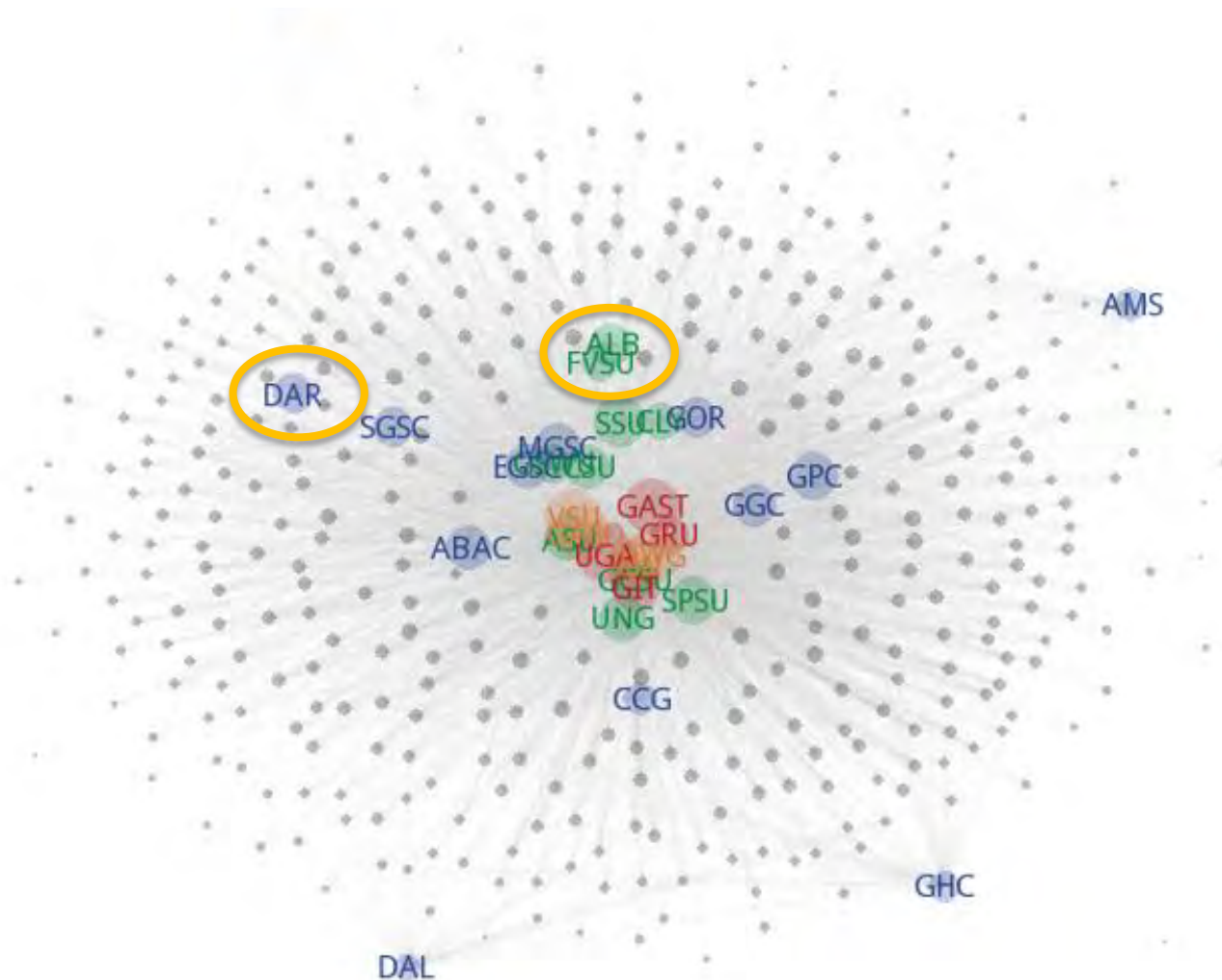
of Freshmen



Total Georgia Freshmen Enrollment by County



USG – Georgia Public High School Network, Fall 2014



Student Profile: Adult Learners*

Adult Learners
(Age>25) as a
percentage of
population, by
Institution
FY 2003-2012

*For this table adult learners
are defined as *all*
undergraduate students over
age of 25 who are enrolled.

Institution Name	2003	2004	2005	2006	2007	2008	2009	2010	2011	2012
Abraham Baldwin Agricultural	38%	38%	28%	23%	28%	18%	18%	19%	21%	20%
Albany State University	27%	28%	27%	26%	25%	26%	27%	27%	24%	24%
Armstrong Atlantic State Univ.	42%	40%	38%	36%	35%	34%	34%	34%	32%	30%
Atlanta Metro. State College	41%	41%	42%	41%	40%	40%	39%	39%	40%	40%
Augusta State University	32%	33%	31%	30%	29%	27%	26%	26%	27%	27%
Bainbridge State College	44%	46%	47%	48%	49%	49%	52%	55%	56%	57%
Clayton State University	56%	54%	52%	49%	49%	50%	51%	53%	54%	53%
College of Coastal Georgia	48%	47%	46%	44%	42%	40%	38%	40%	39%	38%
Columbus State University	31%	31%	32%	31%	29%	29%	29%	31%	32%	31%
Dalton State College	45%	44%	42%	40%	37%	35%	35%	34%	32%	31%
Dartmouth State College	46%	45%	48%	48%	50%	50%	52%	52%	52%	52%
East Georgia State College	25%	25%	21%	18%	17%	15%	16%	17%	16%	14%
Fort Valley State University	19%	18%	18%	16%	15%	12%	10%	11%	13%	13%
Gainesville State College	22%	19%	18%	18%	18%	17%	17%	19%	21%	22%
Georgia College & State Univ.	14%	12%	9%	8%	6%	6%	6%	5%	4%	4%
Georgia Gwinnett College				58%	33%	24%	25%	25%	23%	23%
Georgia Highlands College	36%	35%	31%	29%	27%	26%	27%	27%	28%	29%
Georgia Institute of Technology	4%	5%	5%	5%	4%	4%	4%	4%	4%	4%
Georgia Perimeter College	35%	35%	35%	34%	34%	34%	35%	38%	38%	37%
Georgia Regents University	36%	35%	34%	37%	37%	34%	30%	29%	31%	32%
Georgia Southern University	8%	9%	8%	8%	8%	8%	8%	8%	8%	9%
GA Southwestern State Univ.	30%	30%	30%	30%	30%	30%	30%	31%	31%	31%
Georgia State University	30%	29%	26%	26%	26%	25%	25%	25%	25%	24%
Gordon State College	20%	21%	20%	20%	20%	20%	20%	20%	21%	23%
Kennesaw State University	36%	35%	34%	33%	31%	30%	30%	30%	29%	28%
Macon State College	45%	47%	47%	47%	46%	44%	43%	44%	43%	42%
Middle Georgia College	28%	29%	27%	26%	26%	25%	24%	24%	26%	26%
North GA College & State	21%	20%	19%	18%	17%	17%	17%	16%	15%	14%
Savannah State Univ	24%	21%	18%	16%	14%	12%	13%	13%	12%	10%
South Georgia College	32%	29%	25%	24%	24%	23%	23%	23%	21%	19%
Southern Polytechnic State	36%	35%	34%	34%	33%	31%	31%	31%	33%	33%
University of Georgia	6%	7%	7%	6%	6%	5%	6%	5%	5%	4%
University of West Georgia	16%	16%	16%	16%	16%	16%	16%	17%	17%	16%
Valdosta State University	20%	18%	16%	15%	14%	13%	13%	13%	14%	14%
Waycross College	37%	37%	40%	41%	40%	36%	36%	36%	35%	31%
USG Average	26%	26%	25%	24%	24%	23%	23%	24%	24%	23%

Part-time Student Enrollment

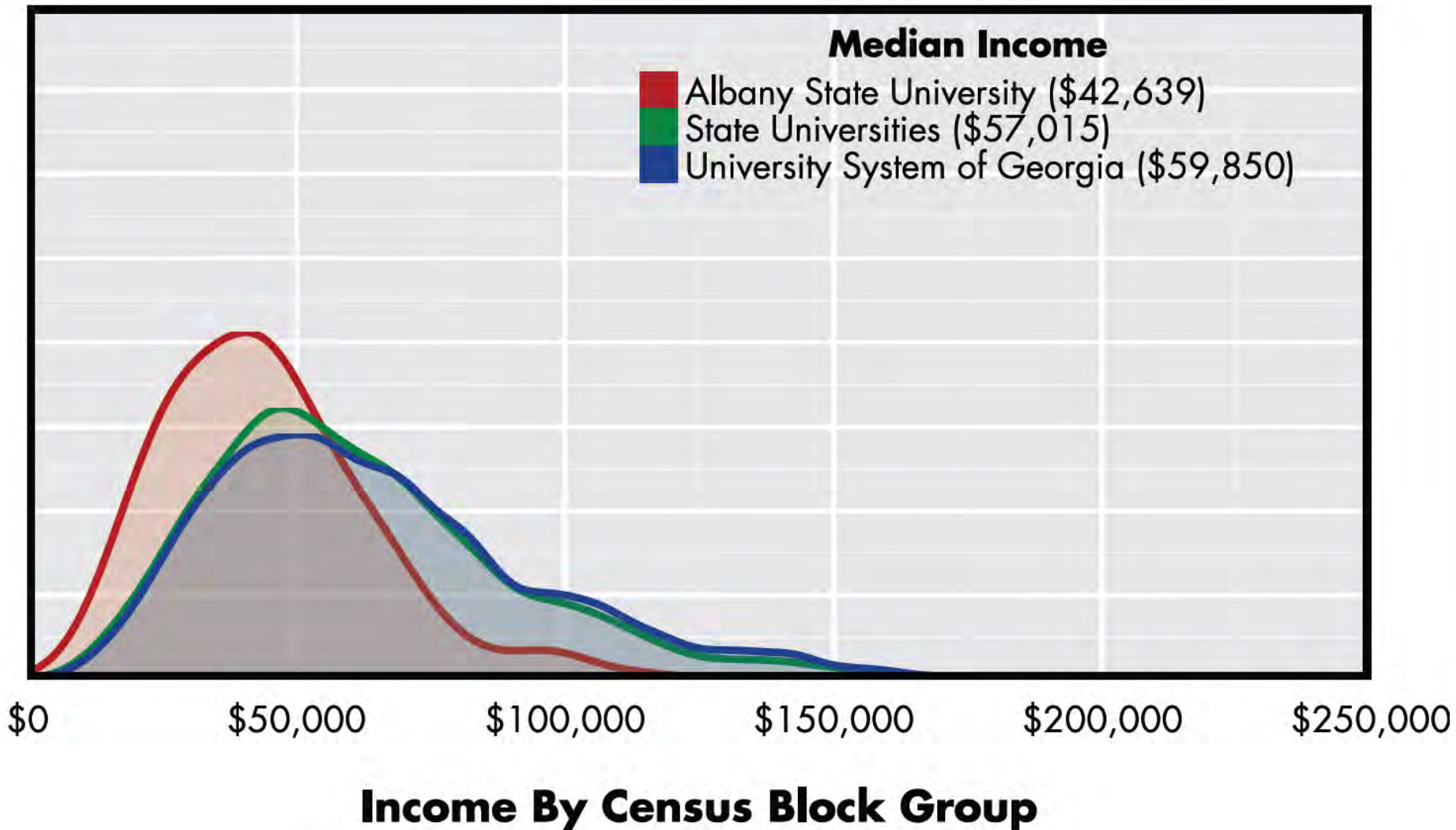
Fall 2015

Albany State 21.4%

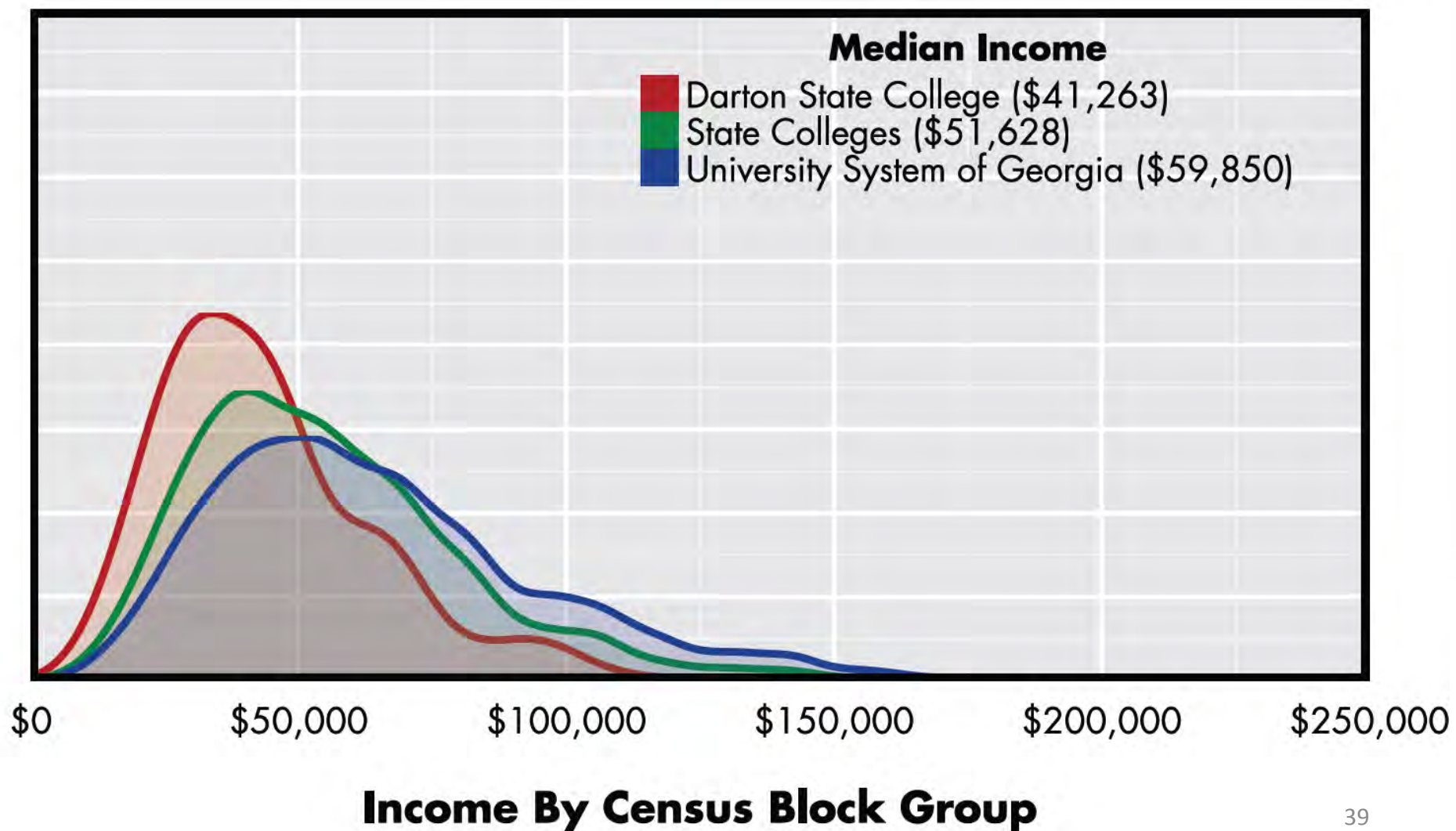
Darton State 54.0%

Fall Semester - Percent Part-time	2008	2009	2010	2011	2012	2013	2014	2015
Abraham Baldwin Agricultural College	28%	26%	26%	31%	32%	31%	29%	27%
Albany State University	22%	22%	19%	18%	20%	24%	24%	21%
Armstrong State University	38%	35%	32%	32%	31%	30%	29%	30%
Atlanta Metropolitan State College	45%	38%	39%	43%	43%	46%	50%	56%
Augusta University	26%	25%	23%	25%	24%	21%	19%	18%
Bainbridge State College	60%	51%	45%	46%	48%	57%	62%	66%
Clayton State University	44%	43%	42%	43%	43%	44%	45%	46%
College of Coastal Georgia	64%	52%	45%	43%	43%	38%	38%	37%
Columbus State University	36%	35%	34%	34%	35%	34%	36%	36%
Dalton State College	45%	40%	39%	41%	41%	39%	38%	36%
Darton State College	55%	51%	52%	51%	51%	52%	53%	54%
East Georgia State College	22%	22%	22%	20%	23%	23%	22%	23%
Fort Valley State University	9%	12%	15%	12%	14%	15%	19%	20%
Georgia College & State University	17%	17%	17%	17%	15%	15%	14%	14%
Georgia Gwinnett College	33%	30%	27%	28%	29%	30%	31%	32%
Georgia Highlands College	43%	39%	42%	46%	50%	48%	51%	54%
Georgia Institute of Technology	11%	12%	12%	13%	13%	13%	17%	22%
Georgia Perimeter College	57%	53%	54%	56%	59%	61%	63%	65%
Georgia Southern University	18%	17%	17%	18%	19%	18%	18%	17%
Georgia Southwestern State University	27%	26%	25%	28%	28%	31%	32%	32%
Georgia State University	29%	28%	28%	29%	28%	26%	26%	26%
Gordon State College	31%	28%	27%	31%	34%	34%	34%	34%
Kennesaw State University	29%	27%	27%	29%	29%	29%	29%	28%
Middle Georgia State College	44%	40%	39%	39%	40%	38%	39%	37%
Savannah State University	15%	15%	14%	15%	14%	12%	12%	13%
South Georgia State College	37%	34%	33%	32%	30%	27%	32%	31%
University of Georgia	13%	11%	10%	10%	10%	9%	13%	10%
University of North Georgia	31%	29%	27%	32%	32%	34%	32%	31%
University of West Georgia	26%	25%	23%	24%	25%	24%	25%	26%
Valdosta State University	21%	21%	20%	23%	23%	25%	27%	29%

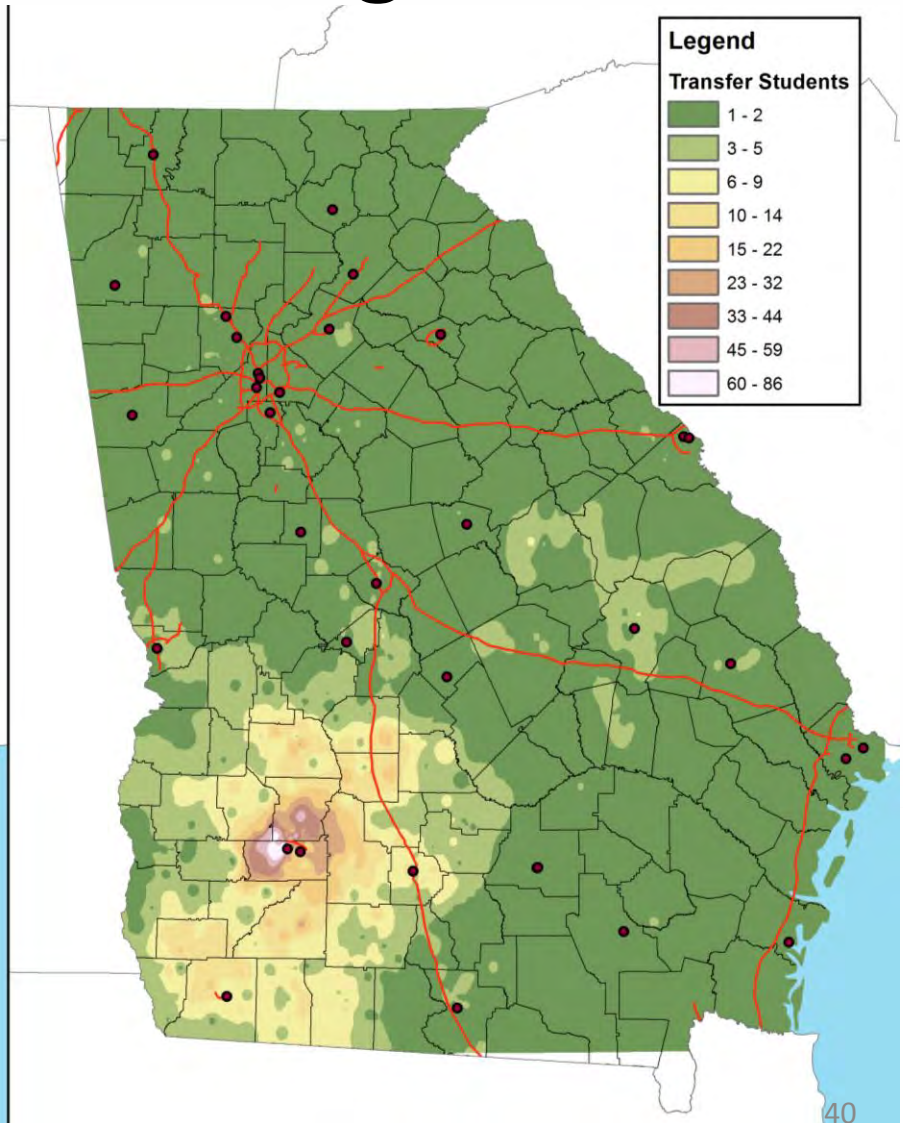
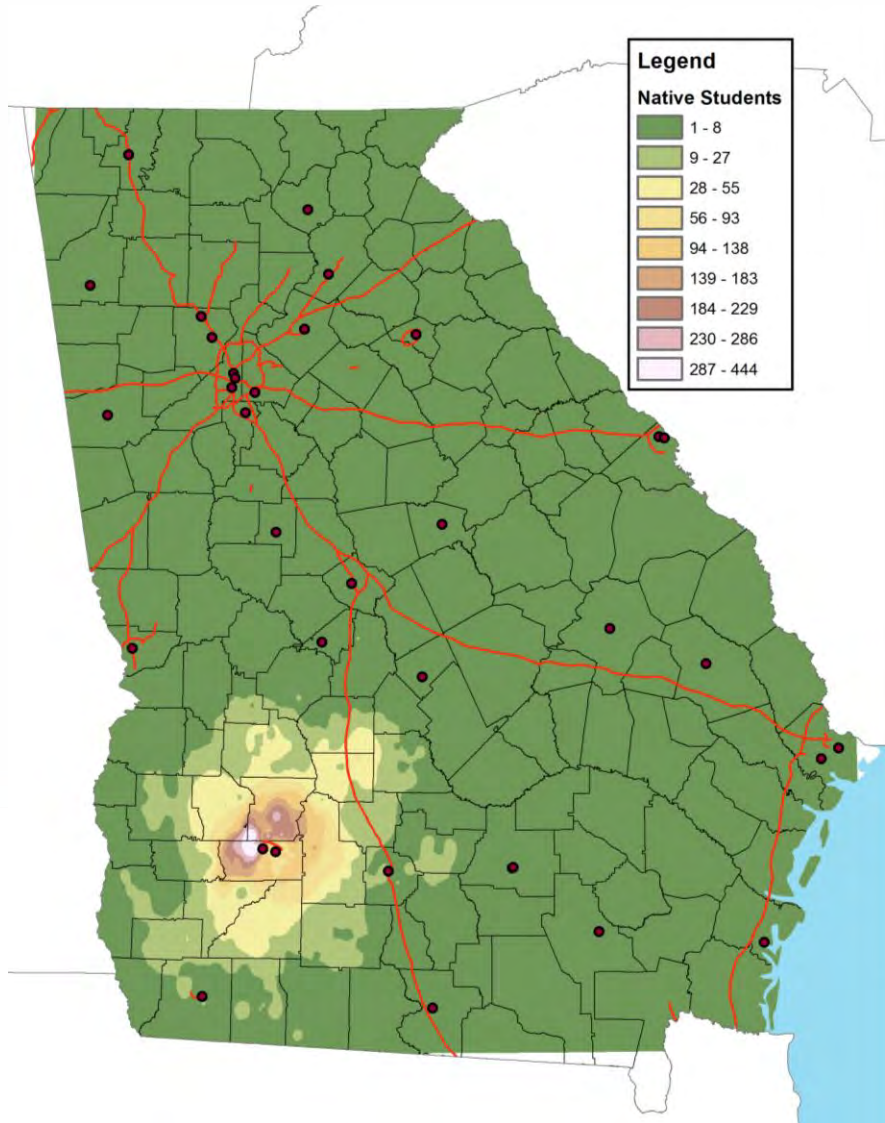
Albany State Income Distribution, Fall 2012



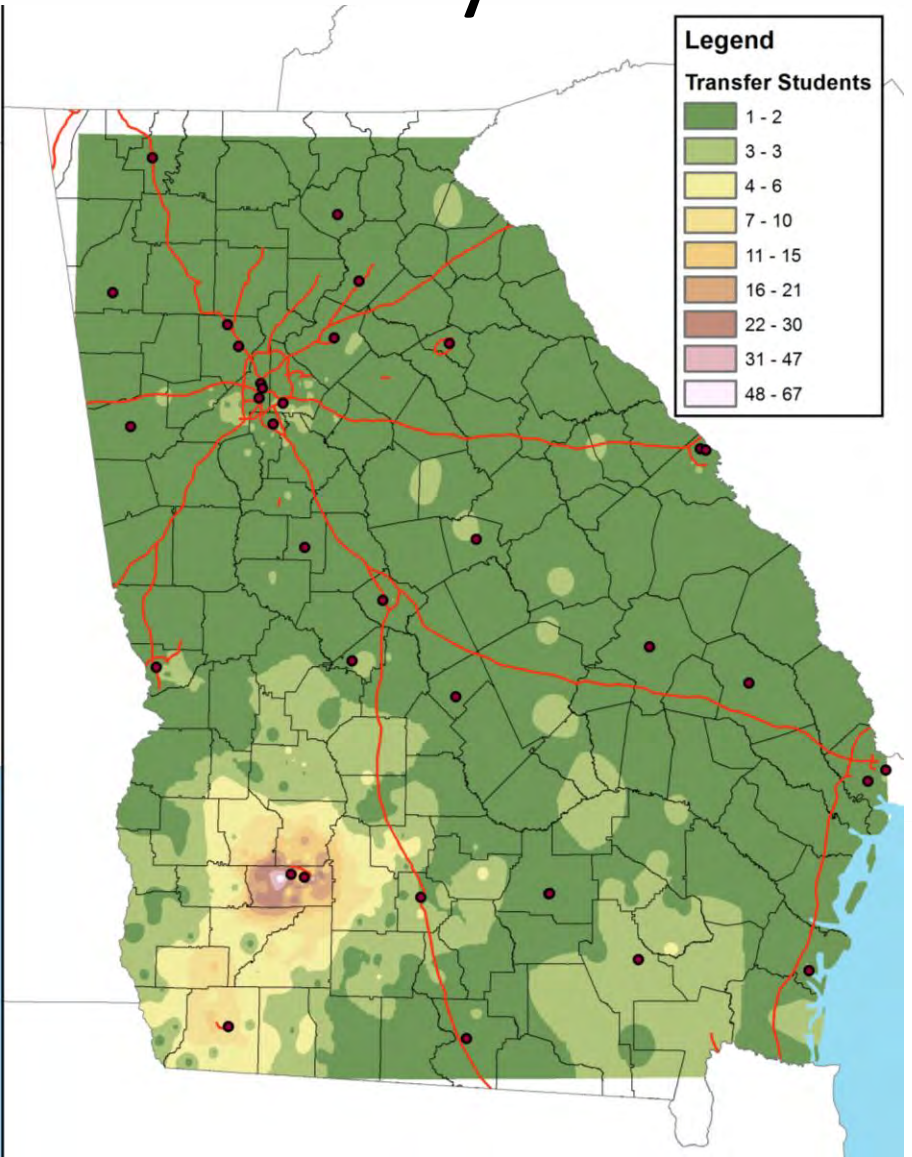
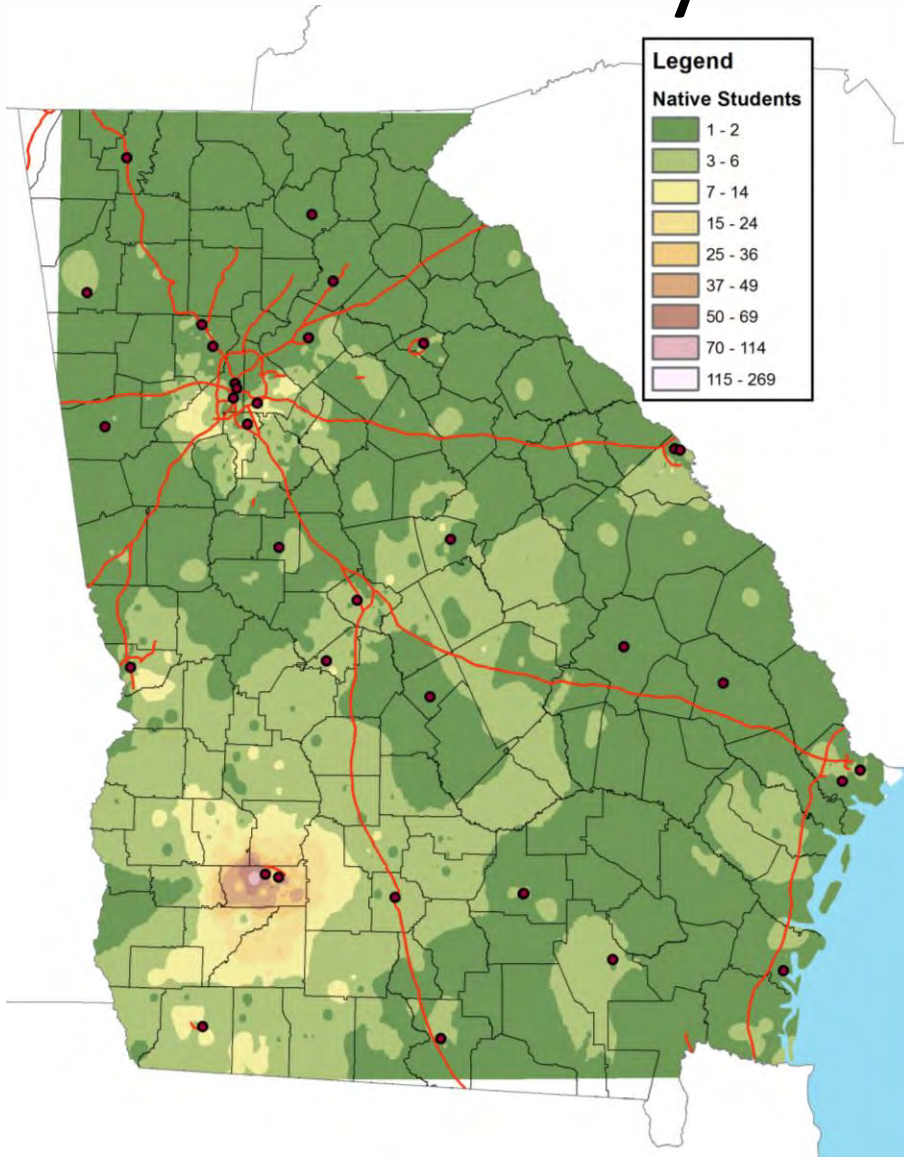
Darton State Income Distribution, Fall 2012



Catchment Area Analysis, Darton State College

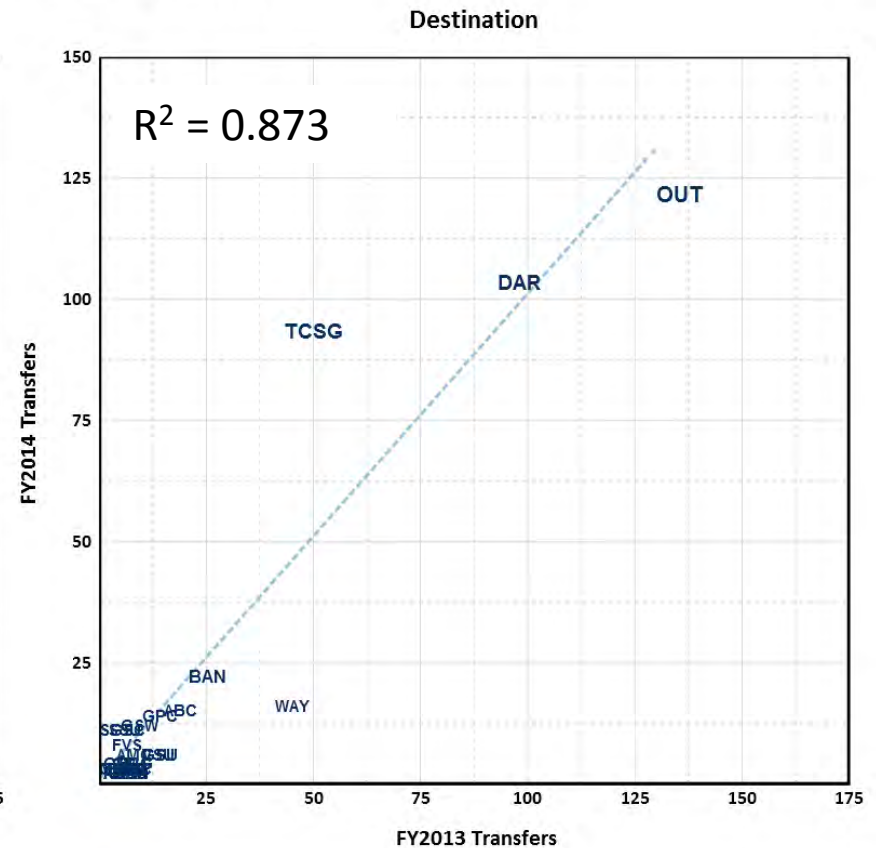
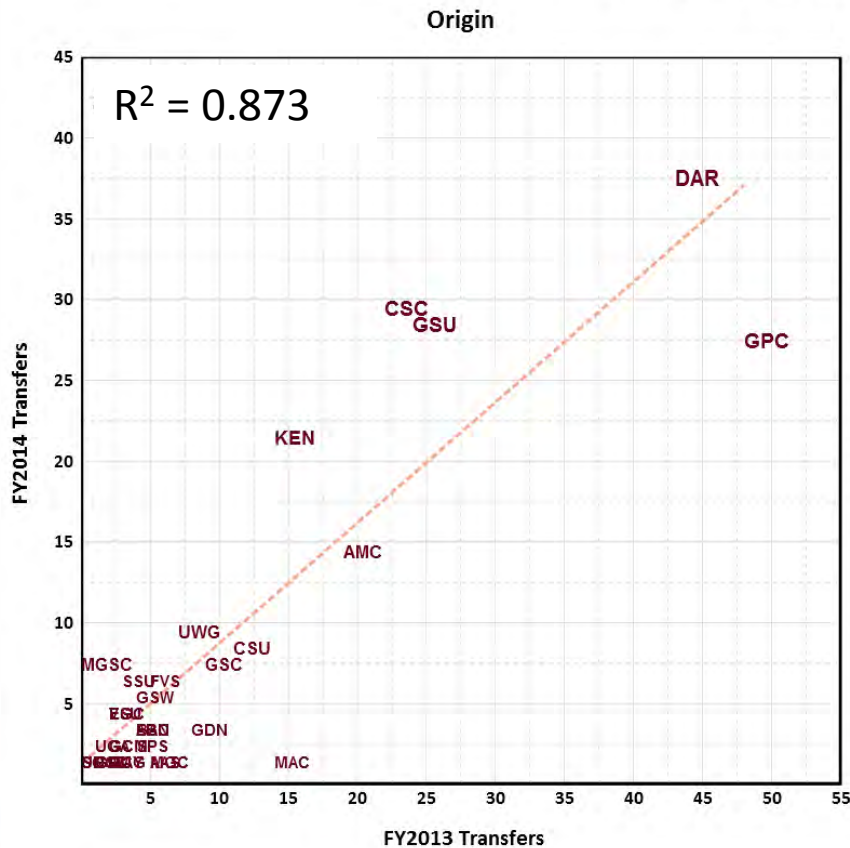


Catchment Area Analysis, Albany State University



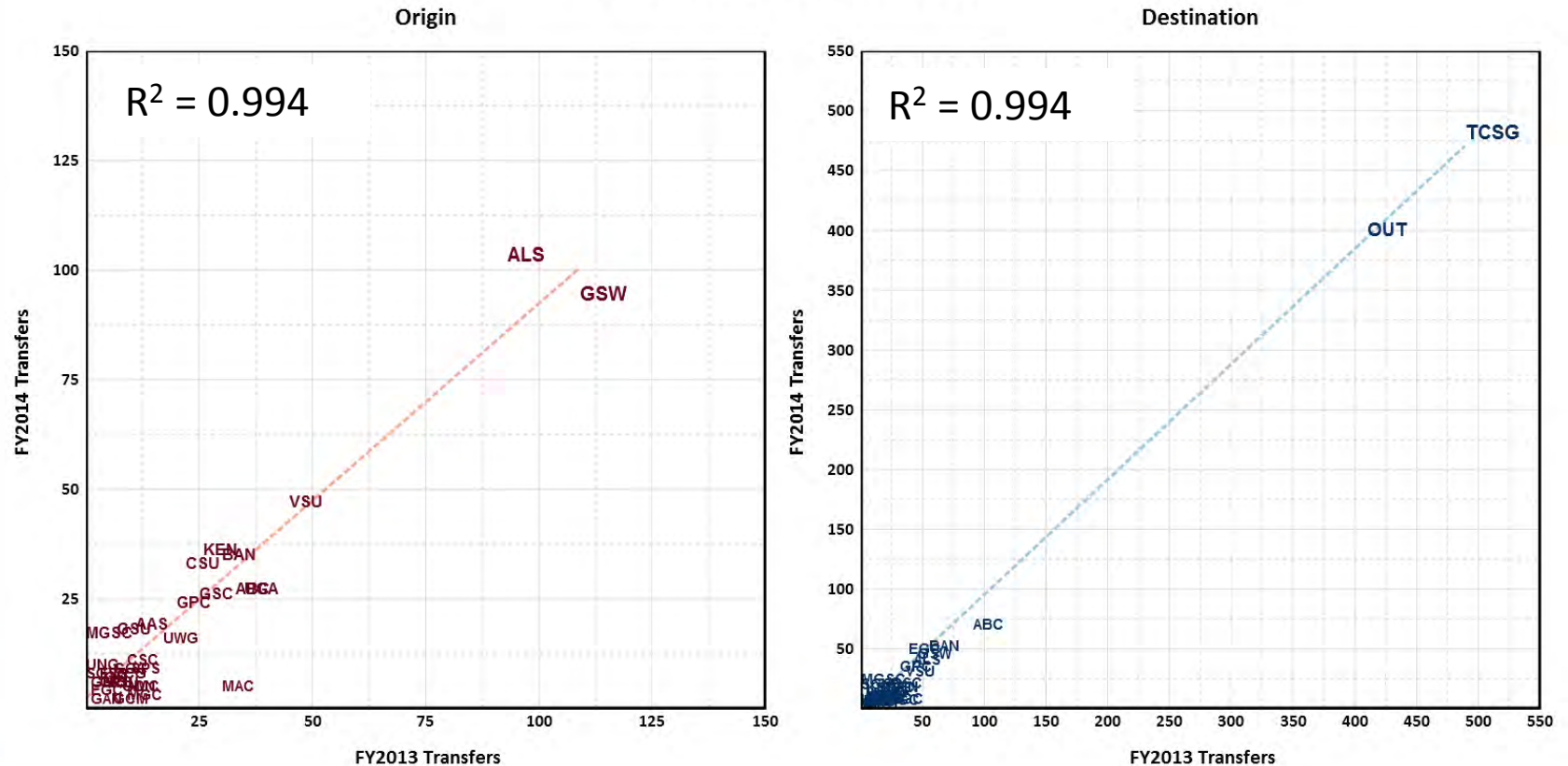
Transfer Stability

Albany State University



Transfer Stability

Darton State College



Comparative Data

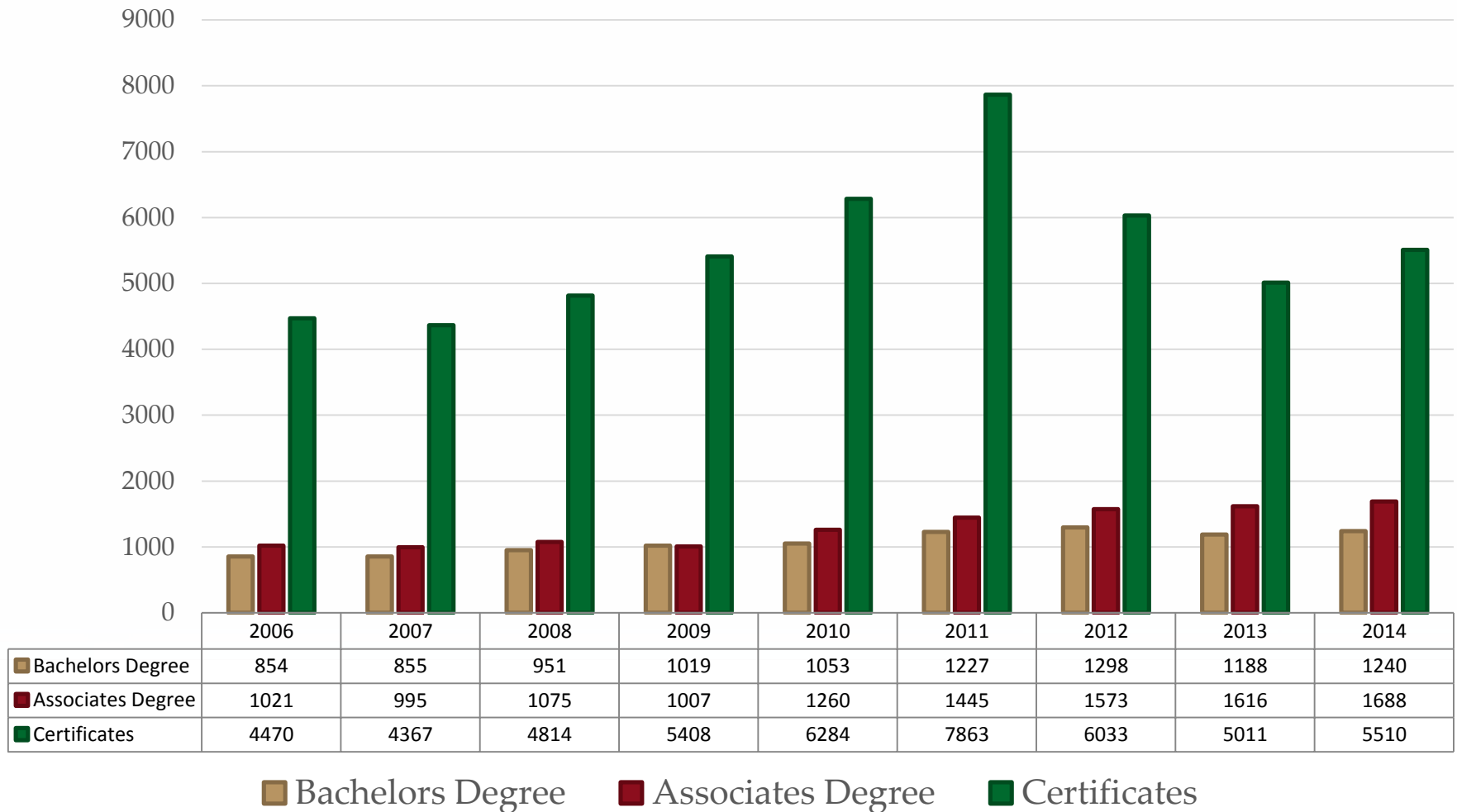
REGIONAL HIGHER EDUCATION COMPLETION DATA

Regional Completions by Institution - 2014

Institution	Certificates	Degrees	Total Completions
<i>Albany State University</i>	<i>13</i>	<i>616</i>	<i>629</i>
<i>Darton State College</i>	<i>86</i>	<i>818</i>	<i>904</i>
Bainbridge State College	540	280	820
Georgia Southwestern State University	62	649	711
Albany Technical College	2,089	241	2,330
South Georgia Technical College	1,231	73	1,304
Southern Regional Technical College*	1,489	204	1,693
Andrew College	0	29	29
Thomas University	0	273	273
Total	5,510	3,183	8,693

*Total of Moultrie Technical College & Southwest Georgia Technical College Data

Completion Trend, All Regional Institutions



Source: EMSI, IPEDS

USG Institution Graduation Rates*, 2011-2015

6-Year Bachelors Degree Graduation Rate	2010- 2011	2011- 2012	2012- 2013	2013- 2014	2014- 2015
Albany State University	45%	41%	39%	43%	40%
Georgia Southwestern State University	31%	30%	29%	36%	32%
University System of Georgia Average	51.6%	51.8%	52.8%	53.4%	52.4%
Associate's Degree 3-Year Graduation Rate**	2010- 2011	2011- 2012	2012- 2013	2013- 2014	2014- 2015
Bainbridge State College	29%	32%	25%	15%	18%
Darton State College	21%	23%	21%	23%	20%
University System of Georgia Average	29.9%	29.4%	27.5%	26.4%	26.7%

*Institution-Specific Rates

** or transfer into a Bachelor's Degree Program

Source: Governor's Office of Student Achievement

REGIONAL INDUSTRY SNAP SHOT



GeorgiaDATA™
More Information. Smarter Decisions.

CARL
VINSON INSTITUTE
OF GOVERNMENT
The University of Georgia.

Regional Exports—Top 10 Exporting Industries

Industry	Output Value (2013)
Employment and Payroll of Federal Government, Military	\$2,198,639,160
Poultry Processing	\$1,492,618,896
Sanitary Paper Product Manufacturing	\$810,827,271
Breweries	\$607,477,905
Cotton Farming	\$516,560,608
Poultry and Egg Production	\$434,636,169
Paperboard Mills	\$354,917,847
Scientific Research and Development Services	\$347,274,872
Roasted Nuts and Peanut Butter Manufacturing	\$332,859,009
Employment and Payroll of Federal Government, Non-Military	\$323,245,422

Industries and Employment

Traded Clusters (2015 Employment)	Local Clusters (2015 Employment)
Business Services (7,320) Agricultural Inputs and Services (6,329) Distribution and Electronic Commerce (5,964) Livestock Processing (5,486) Federal Government (4,001) Wood Products (1,988) Paper and Packaging (1,908) Hospitality and Tourism (1,904) Transportation and Logistics (1,427) Food Processing and Manufacturing (1,404)	Local Government (23,931) Health Services (18,528) Local Hospitality Establishments (11,095) Commercial Services (7,731) Real Estate, Construction, and Development (7,211) State Government (6,999) Retailing of Clothing and General Merchandise (6,159) Motor Vehicle Products and Services (5,582) Local Food and Beverage Processing & Distribution (4,881) Financial Services (2,694)

NOTE: Local clusters are those that serve primarily the local markets (e.g., retail), whose employment is evenly distributed across regions in proportion to regional population. Traded clusters are those that are more geographically concentrated and produce goods and services that are sold across regions and countries. A local cluster focuses on serving a region's population and their needs.

26 County High-Level Industry Overview

NAICS	Description	2006 Jobs	2015 Jobs	Change	% Change	2015 Location Quotient	Current Wages, Salaries, & Proprietor Earnings
11	Crop and Animal Production	8,299	8,635	336	4%	5.05	\$28,425
21	Mining, Quarrying, and Oil and Gas Extraction	801	335	(466)	(58%)	0.34	\$50,795
22	Utilities	731	705	(26)	(4%)	1.01	\$67,855
23	Construction	7,237	4,692	(2,545)	(35%)	0.57	\$42,565
31	Manufacturing	29,139	19,043	(10,096)	(35%)	1.24	\$46,942
42	Wholesale Trade	7,562	6,716	(846)	(11%)	0.91	\$51,975
44	Retail Trade	20,875	18,730	(2,145)	(10%)	0.96	\$22,797
48	Transportation and Warehousing	4,660	4,261	(399)	(9%)	0.72	\$39,808
51	Information	1,858	1,321	(537)	(29%)	0.38	\$41,015
52	Finance and Insurance	4,456	4,293	(163)	(4%)	0.57	\$50,957
53	Real Estate and Rental and Leasing	1,737	2,020	283	16%	0.76	\$28,239
54	Professional, Scientific, and Technical Services	4,113	6,218	2,105	51%	0.57	\$40,245
55	Management of Companies and Enterprises	949	549	(400)	(42%)	0.20	\$74,367
56	Administrative and Support and Waste Management and Remediation Services	9,809	8,865	(944)	(10%)	0.80	\$24,972
61	Educational Services	1,437	2,036	599	42%	0.44	\$29,112
62	Health Care and Social Assistance	19,833	20,125	292	1%	0.87	\$43,654
71	Arts, Entertainment, and Recreation	1,001	731	(270)	(27%)	0.27	\$17,203
72	Accommodation and Food Services	10,588	11,991	1,403	13%	0.74	\$13,969
81	Other Services (except Public Administration)	7,326	6,514	(812)	(11%)	0.90	\$24,128
90	Government	57,628	54,449	(3,179)	(6%)	1.80	\$41,917
Total.....		200,039	182,229	(17,810)	(9%)		

Land in Farms, 2012

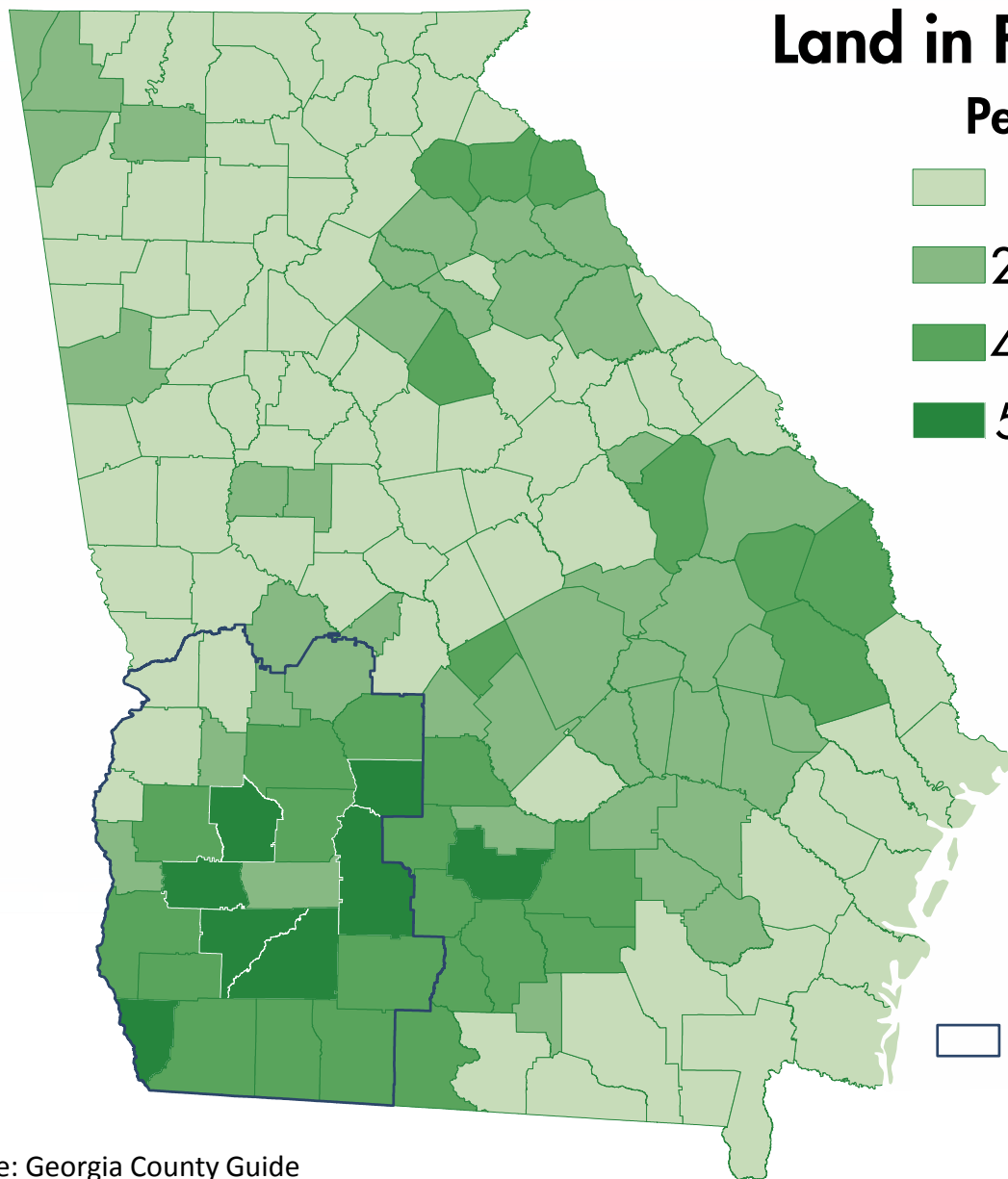
Percent

0.9–24.9

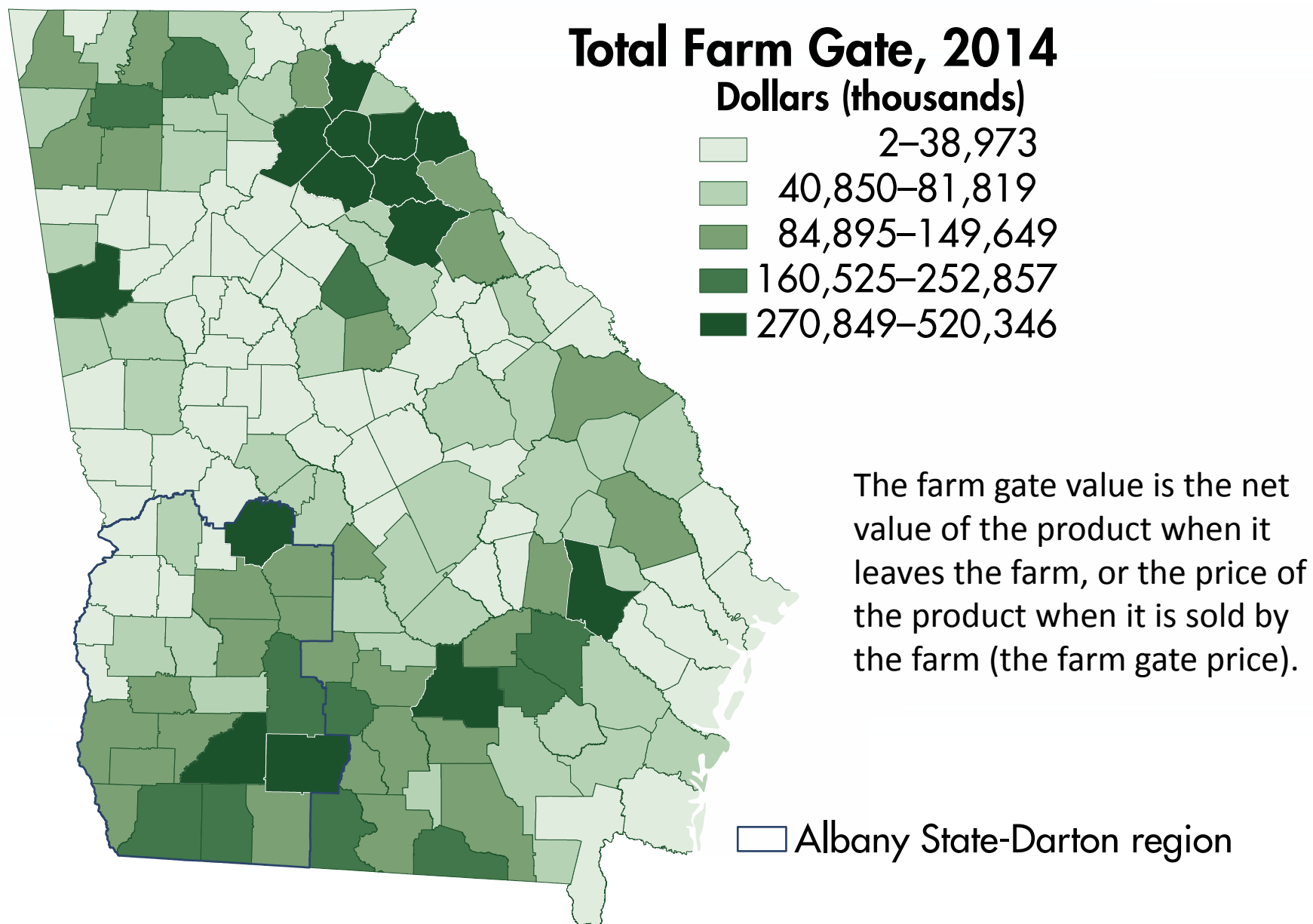
25.0–39.9

40.0–54.9

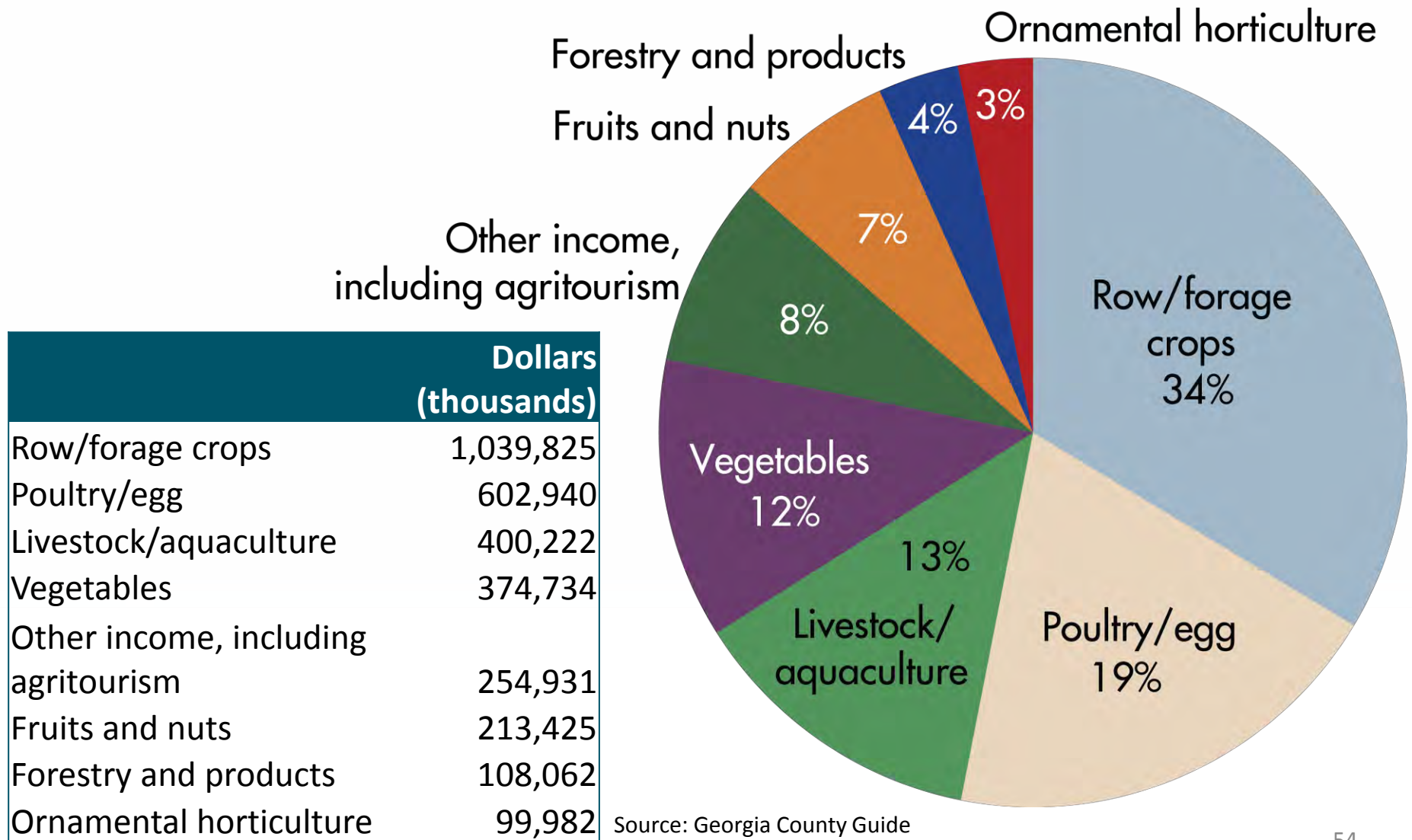
55.0–67.2



Albany State-Darton region

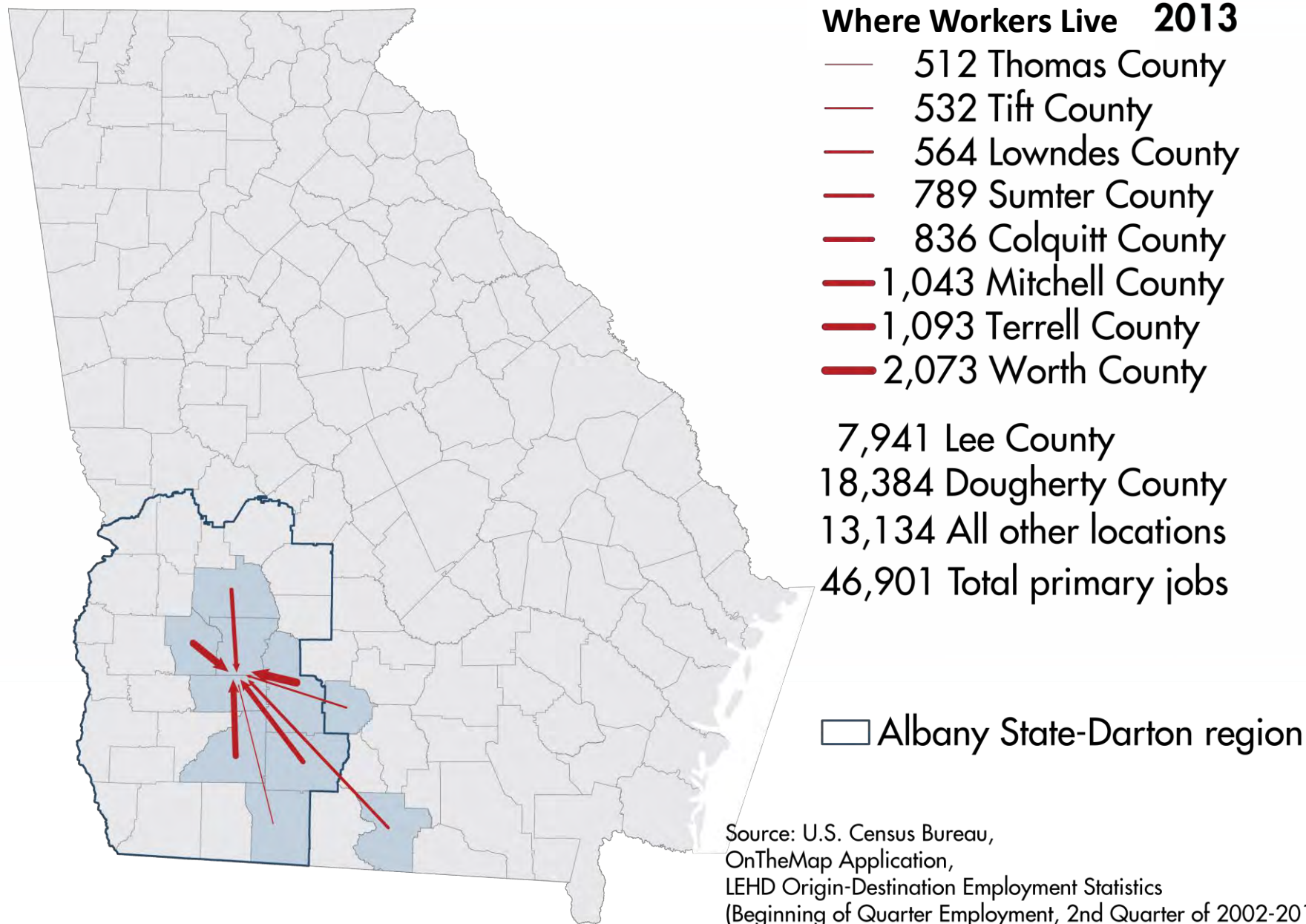


Value of Agricultural Commodities in the 26 county region, 2014



WHERE PEOPLE WORK

Where Workers Who are Employed in Dougherty and Lee Counties Live



Where Workers Who Live in Dougherty and Lee Counties are Employed

Work Destinations, 2013

- 399 DeKalb County
- 438 Sumter County
- 450 Colquitt County
- 463 Bibb County
- 548 Lowndes County
- 721 Muscogee County
- 753 Fulton County
- 1,359 Mitchell County

3,065 Lee County
23,260 Dougherty County
7,702 All other locations
39,158 Total primary jobs

□ Albany State-Darton region

Source: U.S. Census Bureau,
OnTheMap Application,
LEHD Origin-Destination Employment Statistics
(Beginning of Quarter Employment, 2nd Quarter of 2002-2013).

Connection to Metro Atlanta

	Destination (Place of Employment)										Total
	Cherokee	Clayton	Cobb	DeKalb	Douglas	Fayette	Fulton	Gwinnett	Henry	Rockdale	
Chattahoochee County, GA	3	22	35	44	10	10	98	32	15	4	273
Colquitt County, GA	4	46	74	57	11	8	154	79	20	14	467
Crisp County, GA	3	51	53	86	18	22	224	71	24	8	560
Dooly County, GA	4	33	51	50	10	16	116	62	17	6	365
Dougherty County, GA	35	212	368	399	56	49	753	374	86	35	2,367
Early County, GA	9	51	110	93	15	15	216	118	33	12	672
Grady County, GA	1		3	2			7				13
Macon County, GA	6	30	35	66	7	14	123	40	22	10	353
Marion County, GA	4	9	25	31	6	7	78	30	13	6	209
Miller County, GA		1		2		2	2	1			8
Mitchell County, GA	12	143	222	254	34	29	460	229	42	24	1,449
Quitman County, GA			1	3			6	4			14
Schley County, GA		7	13	21	3	3	44	13	5	3	112
Seminole County, GA		4	5	4	2		15	9	3		42
Sumter County, GA	38	52	111	136	19	25	254	116	28	21	800
Thomas County, GA	22	166	314	347	43	48	691	292	63	33	2,019
Webster County, GA	4	7	14	12	1	2	25	16	5	2	88
Total	145	834	1,434	1,607	235	250	3,266	1,486	376	178	9,811
*Note counties not listed on the Home Column do not have any residents traveling to ARC 10 County Region											

LABOR MARKET

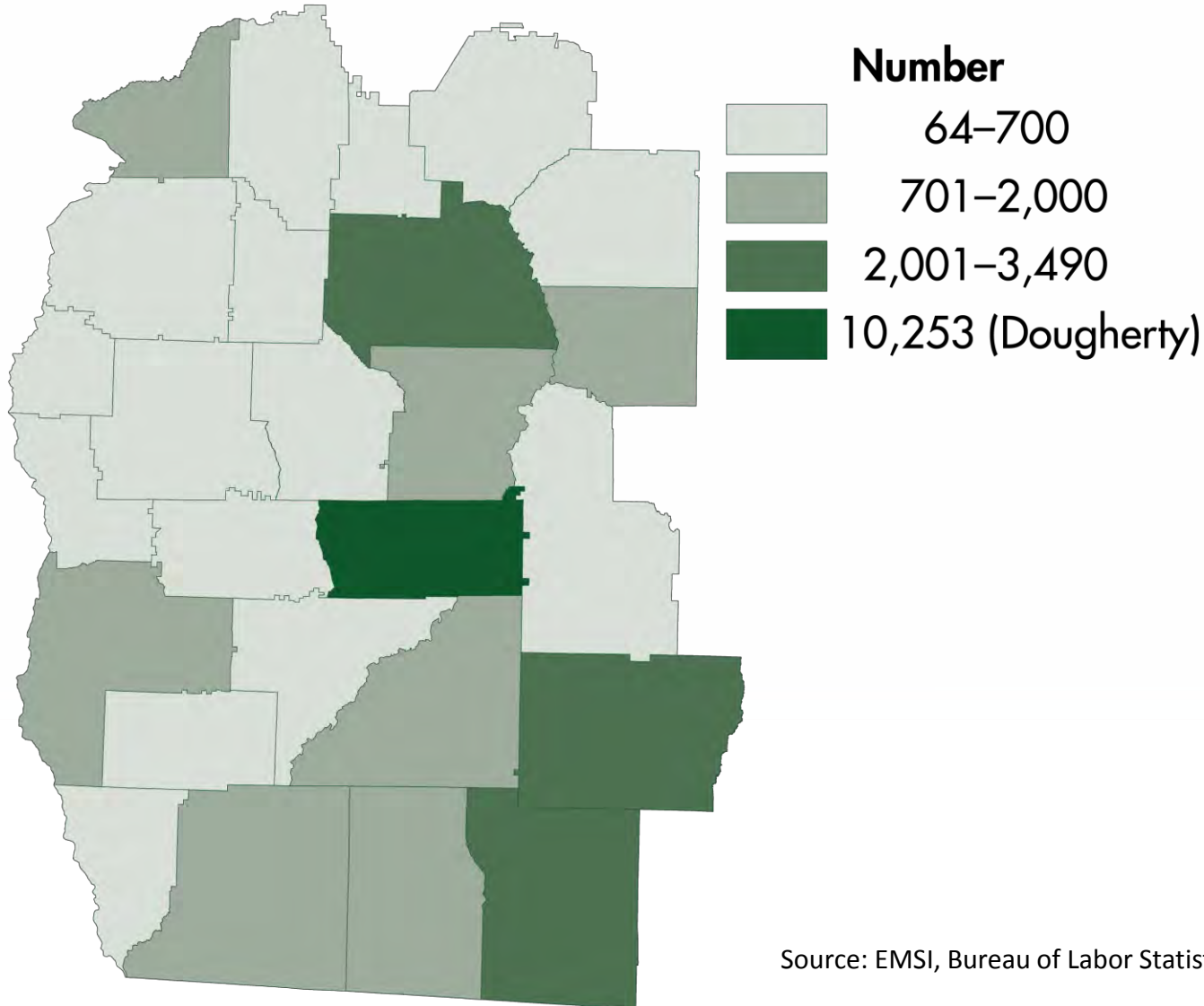
Top 10 Jobs in the Region Requiring a Bachelor's Degree or Greater (existing jobs)

Occupation	2015 Jobs	Avg. Hourly Earnings	Typical Entry Level Education
General and Operations Managers	2,617	\$39.94	Bachelor's degree
Elementary School Teachers, Except Special Education	2,193	\$24.95	Bachelor's degree
Middle School Teachers, Except Special and Career/Technical Education	1,419	\$24.84	Bachelor's degree
Secondary School Teachers, Except Special and Career/Technical Education	1,373	\$23.75	Bachelor's degree
Substitute Teachers	1,322	\$9.35	Bachelor's degree
Postsecondary Teachers	1,280	\$28.82	Doctoral or professional degree
Accountants and Auditors	870	\$33.02	Bachelor's degree
Recreation Workers	779	\$10.32	Bachelor's degree
Physicians and Surgeons, All Other	563	\$111.78	Doctoral or professional degree
Child, Family, and School Social Workers	536	\$16.21	Bachelor's degree

Source: EMSI, Bureau of Labor Statistics

Where are the Bachelor's Plus Jobs?

Jobs Requiring Bachelor's Degree or Higher, 2015



Source: EMSI, Bureau of Labor Statistics

Top 10 Jobs In the Region Requiring Less than a Bachelor's Degree (existing jobs)

Occupation	2015 Jobs	Avg. Hourly Earnings	Typical Entry Level Education
Retail Salespersons	5,031	\$10.78	Less than high school
Cashiers	4,846	\$8.77	Less than high school
Laborers and Freight, Stock, and Material Movers, Hand	4,475	\$11.27	Less than high school
Combined Food Preparation and Serving Workers, Including Fast Food	4,446	\$8.33	Less than high school
Office Clerks, General	3,366	\$11.60	High school diploma or equivalent
Farmworkers and Laborers, Crop, Nursery, and Greenhouse	3,184	\$9.11	Less than high school
Registered Nurses	3,038	\$27.58	Associate's degree
Secretaries and Administrative Assistants, Except Legal, Medical, and Executive	2,755	\$13.63	High school diploma or equivalent
Customer Service Representatives	2,741	\$13.27	High school diploma or equivalent
Heavy and Tractor-Trailer Truck Drivers	2,609	\$17.30	Postsecondary non-degree award

Job Posting Analytics

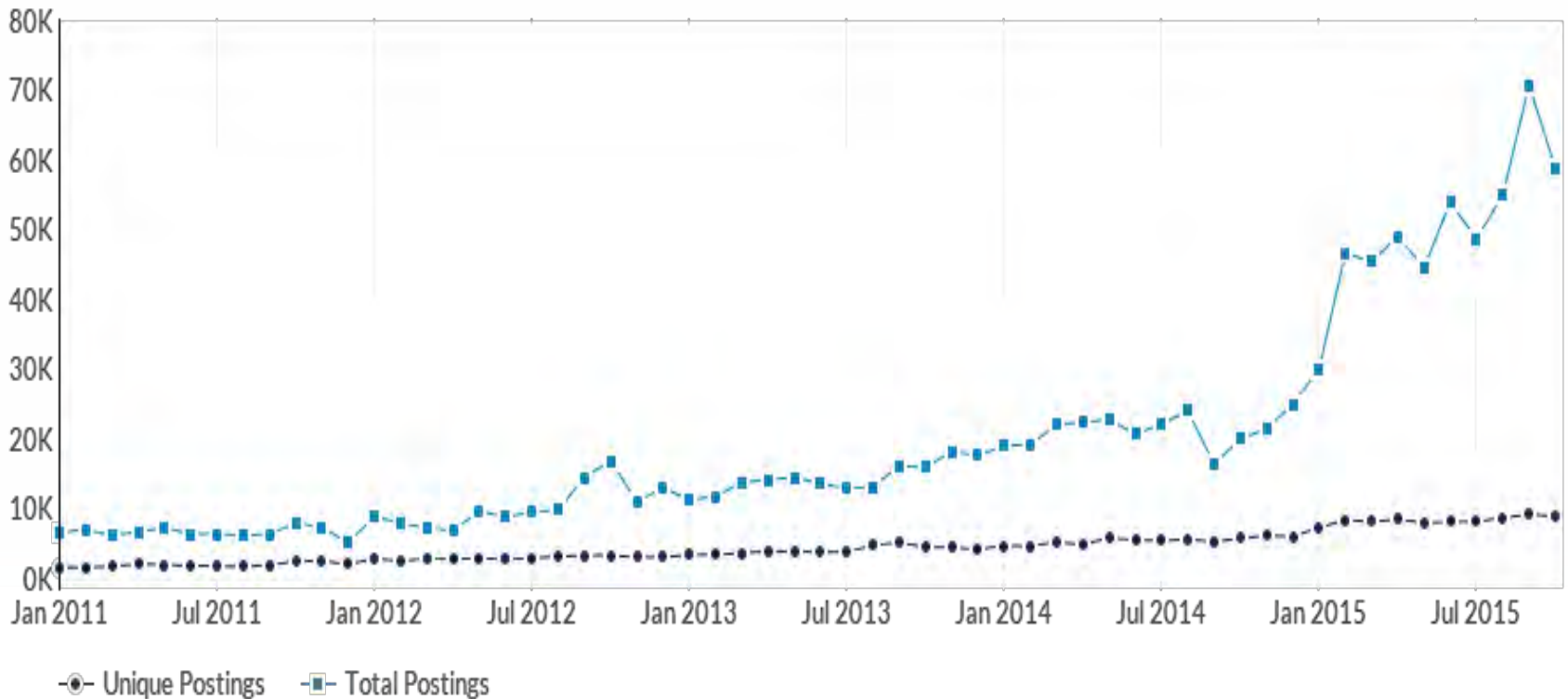
All Jobs	8,781 Unique Posting 58,785 Total Postings	7:1 Posting Intensity
Jobs Typically Requiring a Bachelor's Degree or Greater	1,926 Unique Postings 8,745 Total Posting	5:1 Posting Intensity

(October 2015)

Source: Economic Modeling Specialists Inc.,
Bureau of Labor Statistics

Job Posting Analytics

Total vs. Unique Posting Trends (All Jobs)



Source: Economic Modeling Specialists Inc.

Job Posting Analytics

Top 10 Bachelor's Degree+ Occupations

	Oct 2015 Unique Postings	Average Unique Postings (Jan 2011-Oct 2015)	Average Posting Intensity (Jan 2011-Oct 2015)
Registered Nurses	440	171	6:1
General and Operations Managers	65	63	3:1
Occupational Therapists	64	50	6:1
Securities, Commodities, and Financial Services Sales Agents	57	33	5:1
Physical Therapists	57	68	6:1
Medical and Health Services Managers	49	26	3:1
Pharmacists	44	20	4:1
Network and Computer Systems Administrators	41	25	4:1
Dentists, General	40	5	7:1
Industrial Engineers	36	32	4:1

Governor's High Demand Career Initiative Trends

- Financial Technologies (FinTech)
- Health Informatics
- Cybersecurity
- Engineering
- Media Arts
- Internships and practical experience
- Soft skills – Team work, public speaking, problem solving, honest, work ethic

Trends and Observations

- Regional population growth is generally flat and the population is getting older.
- Job growth is projected to be flat *if nothing changes*.
- Two-year degrees are in demand due to the type of jobs available in the region.
- Local labor demand is highest in government, health care, agriculture and professional services related industries.
- The region has an employment connection to the Atlanta region.
- Historically, Darton State has a much higher percentage of part-time and non-traditional students.



GeorgiaDATA™
More Information. Smarter Decisions.



Prepared by the State Services and Decision Support Division

David Tanner, Associate Director

Mathew Hauer, Applied Demographer

Jan Coyne, GIS and Data Visualization

Greg Wilson, Fiscal Analyst

James Byars, Scientific Computing Professional

Holly Lynde, Fiscal Analyst

Wes Clarke, Senior Public Service Faculty

Connect With Us!



Facebook

**facebook.com
/VinsonInstitute**



Twitter

@CVIOG_UGA



LinkedIn

**Carl Vinson Institute
of Government**



www.cviog.uga.edu



GeorgiaDATA™
More Information. Smarter Decisions.

**CARL
VINSON INSTITUTE
OF GOVERNMENT**
The University of Georgia.