



Nearly 1 in 10 Businesses With Employees are New

The U.S. Census Bureau recently released findings from the inaugural



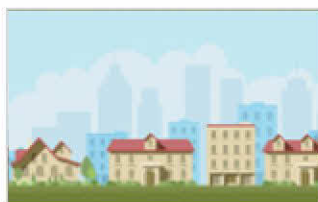
Nearly 1 in 10 Businesses With Employees Are New

September 01, 2016

Findings from the U.S. Census Bureau's inaugural Annual Survey of Entrepreneurs providing a portrait of America's business owners.

Annual Wages

Illinois production workers annual wages rose by 2% from 2013 to 2014 to \$16.9 billion.



Income, Poverty & Health Insurance Statistics and ACS Results

August 31, 2016

MEDIA ADVISORY: Release schedule for 2015 income, poverty and health insurance coverage statistics and the 2015 American Community Survey results.



Thur Sep 1	Fri Sep 2	Mon Sep 5	Tue Sep 6	Wed Sep 7
---------------	--------------	--------------	--------------	--------------

Media Advisory: ACS

Pre-release Webinar

Thu, Sep 1, 2016



2014 Small Area Health Insurance Estimates Now Include Ages 21 to 64

August 30, 2016

The 2014 Small Area Health Insurance Estimates have been updated to include estimates for insured and uninsured individuals ages 21 to 64.

News Release and

Graphic: Annual

Survey of

Entrepreneurs

(Embargoed Aug. 31

at 10 am EDT for

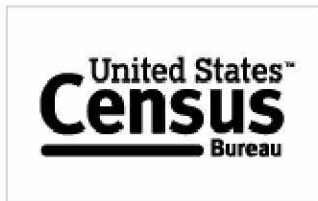


FFF: Unmarried and Single Americans Week: Sept. 18-24, 2016

August 25, 2016

The third week of September recognizes the nation's unmarried Americans with statistics from the

economic subject areas.



Integrated Communications Contract for the 2020 Census

August 24, 2016

Today, the U.S Census Bureau awarded an Integrated Communications Contract for the 2020 Census to Young & Rubicam (Y&R).

Public Release Sept.

1 at 12:01 am) Thu,

Sep 1, 2016

Construction

Spending Thu, Sep 1,

2016

at 10:00am